



**Brawley City Council &  
Successor Agency to Brawley  
Community Redevelopment Agency  
Regular Meeting Agenda  
February 18, 2025 at 5:00 PM  
City Council Chambers  
383 Main Street  
Brawley, California 92227**

**This meeting will be broadcast live at**

[https://brawley-ca.granicus.com/ViewPublisher.php?view\\_id=1](https://brawley-ca.granicus.com/ViewPublisher.php?view_id=1)

***Gil Rebollar***, Mayor  
***JJ Galvan***, Mayor Pro-Tempore  
***Timothy Kelley***, Council Member  
***John Grass***, Council Member  
***Perry Monita***, Council Member

***Ana Gutierrez***, City Clerk  
***William Smerdon***, Acting City Treasurer  
***William S. Smerdon***, City Attorney  
***Jimmy Duran***, City Manager/  
Executive Director

**CALL TO ORDER**

**ROLL CALL**

**INVOCATION**

**PLEDGE OF ALLEGIANCE**

1. **APPROVAL OF AGENDA**

2. **CLOSED SESSION**

**CONFERENCE WITH LEGAL COUNSEL-ANTICIPATED LITIGATION**

Agency designated representative: Interim City Manager, City Attorney and Shirley Bonillas, Human Resource Administrator  
Significant exposure to litigation pursuant to paragraph (2) or (3) of subdivision (d) of Section 54956.9: one case

**CONFERENCE WITH LEGAL COUNSEL-ANTICIPATED LITIGATION**

Agency designated representative: Interim City Manager, City Attorney and Shirley Bonillas, Human Resource Administrator  
Personnel Matter  
Significant exposure to litigation pursuant to Paragraph (2) or (3) of subdivision (d) of Section 54956.9.

**PUBLIC EMPLOYEE PERFORMANCE EVALUATION**

Title: Interim City Manager

**CONFERENCE WITH LABOR NEGOTIATORS**

Agency Negotiator: Jimmy Duran, Interim City Manager  
Employee Organization: All bargaining groups and unrepresented employees  
294 Claims, 264 Workers Comp, and 30 General Liability.

3. **PUBLIC APPEARANCES/COMMENTS** (Not to exceed 4 minutes.)

This is the time for the public to address the Council **on any item not appearing on the agenda** that is within the subject matter jurisdiction of the City Council. The Mayor will recognize you and when you come to the microphone, please state your name for the record. You are not allowed to make personal attacks on individuals or make comments which are slanderous, or which may invade an individual's personal privacy. Please direct your questions and comments to the City Council.

Any member of the public is invited to submit public comments in advance of the meeting to be read at the meeting. Please email your questions to [valerie.sonico@brawley-ca.gov](mailto:valerie.sonico@brawley-ca.gov) or call 760-351-3048 any time before 1:30 PM, - February 18, 2025.

- a. Public Comments for Items not on the Agenda.
- b. Presentation of Proclamation recognizing former Mayor Don Campbell in commemoration of Black History Month. Presented by: Mayor Rebollar.

- c. Presentation of Proclamation recognizing Nicholas Navarro for his work with the Eagle Scouts on community projects in Brawley. Presented by: Mayor Rebollar.
- d. Presentation by IID Director Gina Young Dockstader.

4. **CONSENT AGENDA**

Items are approved by one motion. Council Members or members of the public may request consent items be considered separately at a time determined by the Mayor.

- a. Approve City Council Meeting Minutes: February 4, 2025  
(1 attachment)
- b. Approve demand check registers processed from January 18, 2025 to January 30, 2025.  
(2 attachments)
- c. Receive and file the First Quarter Fiscal Year 2024-25 Treasury Report for Quarter ended September 30, 2024.  
(2 attachments)
- d. Approval of Letter of Support to the Imperial Valley Business Resource Center (IVBRC)  
(1 attachment)

5. **CITY MANAGER REPORT**

6. **REGULAR BUSINESS**

- a. Potential action to approve Resolution to adopt Personnel Policy 153-60 and Personnel Policy 153-61. Presented by Jimmy Duran, City Manager.  
(4 attachments)
- b. Potential action to approve the Zone Change Ordinance and 1<sup>st</sup> reading for ZC 24-02. Presented by: Cynthia Mancha, Consultant City Planner.  
(5 attachments)
- c. Potential Action to Authorize a budget adjustment and approve the purchase of two VFDs for the Wastewater Treatment Plant (WWTP). Presented by: Rom Medina, Public Works Director.  
(2 attachments)

- d. Potential Action to Award Contract to Holt Group for the Design of the Street Rehabilitation Project Phase 1 in an amount that does not exceed \$59, 561.84, and authorize the City Manager to execute all documentation relating to this agreement. Presented by: Rom Medina, Public Works Director.

(2 attachments)

- e. Potential action to Approve amending the FY24/25 Budget for the Fire Department to reflect and increase in Revenue in the total amount of \$140,419.23 and to amend Overtime and Equipment line items. Presented by Chief Mike York, Fire Chief.

(3 attachments)

7. **INFORMATIONAL REPORTS**

8. **CITY COUNCIL MEMBER REPORTS**

9. **CITY ATTORNEY REPORT**

**ADJOURNMENT: *Regular Meeting March 04, 2025 @ 6:00 PM***, 383 Main Street, Brawley, California. Supporting Documents are available for public review in the Office of the City Clerk, 383 Main Street, Brawley, California 92227 - Monday through Friday during Regular Business Hours; Individuals who require special accommodations are requested to give 48 hours prior notice. Contact: Office of the City Clerk @ 760-351-3048.

**Ana Gutierrez**, City Clerk

**CITY OF BRAWLEY**  
**February 4, 2025**

**4a**

The City Council of the City of Brawley, California, met in regular session at 5:30 p.m., City Council Chambers, the meeting's date, time, and place was duly established. The City Clerk attests to the agenda's posting pursuant to Cal. Govt. Code § 54954.2.

**Mayor Rebollar called the meeting to order at 5:30 pm.**

[https://brawley-ca.granicus.com/ViewPublisher.php?view\\_id=1](https://brawley-ca.granicus.com/ViewPublisher.php?view_id=1)

**PRESENT:** Monita, Grass, Galvan, Rebollar, Kelley (Arrived at 6:00 pm)

**PRESENT VIA ZOOM:** None

**ABSENT:**

**1. APPROVAL OF AGENDA**

M/S/C Galvan/Grass/4-0 (Kelley Absent)

[https://brawley-ca.granicus.com/ViewPublisher.php?view\\_id=1](https://brawley-ca.granicus.com/ViewPublisher.php?view_id=1)

**2. CLOSED SESSION (Returned 6:00 p.m.)**

**CONFERENCE WITH LABOR NEGOTIATORS**

Agency designated representatives: Interim City Manager

Employee Organizations: All bargaining groups and unrepresented employees.

Significant exposure to litigation to paragraph (2) or (3) of subdivision (d) of Section 54956.9: One Case.

**No action. Information provided to Council.**

**CONFERENCE WITH LEGAL COUNSEL-ANTICIPATED LITIGATION**

Agency designated representative: Interim City Manager

Lions Center Pool

Significant exposure to litigation pursuant to Paragraph (2) or (3) of subdivision (d) of Section 54956.9.

**No action. Information provided to Council.**

**CONFERENCE WITH LEGAL COUNSEL-ANTICIPATED LITIGATION**

Agency designated representative: Interim City Manager, City Attorney, and Shirley Bonillas, Human Resource Administrator Personnel Matter Significant exposure to litigation pursuant to Paragraph (2) or (3) of subdivision (d) of Section 54956.9.

**Council Action motion to deny government claim. m/s/c Galvan/Monita/4-0 Kelley Absent**

[https://brawley-ca.granicus.com/ViewPublisher.php?view\\_id=1](https://brawley-ca.granicus.com/ViewPublisher.php?view_id=1)

**INVOCATION: CM Grass**

**PLEDGE OF ALLEGIANCE: CM Kelly**

### 3. PUBLIC APPEARANCES/COMMENTS

- a. Public comments are needed for items not on the agenda.

Eric Reyes commented on the Air Pollution Control District (APCD) appeal regarding the generators.

[https://brawley-ca.granicus.com/ViewPublisher.php?view\\_id=1](https://brawley-ca.granicus.com/ViewPublisher.php?view_id=1)

Janet Stills, President of the Pickle Ball Association, commented on revitalizing Meserve Park Courts.

Sue Casey, Treasurer, commented on how well they did at the tournament in December.

[https://brawley-ca.granicus.com/ViewPublisher.php?view\\_id=1](https://brawley-ca.granicus.com/ViewPublisher.php?view_id=1)

Julie Reeves commented on trash fines if improperly separated in the proper receptacles.

[https://brawley-ca.granicus.com/ViewPublisher.php?view\\_id=1](https://brawley-ca.granicus.com/ViewPublisher.php?view_id=1)

Mayor Rebollar commented on the comments by Eric Reyes regarding APCD.

[https://brawley-ca.granicus.com/ViewPublisher.php?view\\_id=1](https://brawley-ca.granicus.com/ViewPublisher.php?view_id=1)

Maria commented on Spectrum Generators.

[https://brawley-ca.granicus.com/ViewPublisher.php?view\\_id=1](https://brawley-ca.granicus.com/ViewPublisher.php?view_id=1)

Comments from CM Grass, City Manager Duran, and Mayor Pro Temp Galvan regarding the generator can be viewed at:

[https://brawley-ca.granicus.com/ViewPublisher.php?view\\_id=1](https://brawley-ca.granicus.com/ViewPublisher.php?view_id=1)

- b. Presentation by Imperial County Behavioral Health Director Leticia Plancarte.

The Imperial County Behavioral Health Services (ICBHS) is proposing to expand its infrastructure in northern Imperial County by developing a campus model that provides accessible, community-based, and client-centered behavioral health services. The project includes the remodeling of a county-owned facility at 220 Main St., Brawley, to house an outpatient Substance Use Disorder (SUD) Treatment Program, a Full-Service Partnership (FSP) mental health clinic for adults, therapeutic rooms for urgent care, a Transportation Unit, and office space for community agencies to offer additional supportive services. **This project is contingent upon obtaining grant funding.**

Mayor Rebollar commented that this is an informational presentation. This Council is not the deciding body for this matter. The Imperial County Board of Supervisors will decide this matter.

[https://brawley-ca.granicus.com/ViewPublisher.php?view\\_id=1](https://brawley-ca.granicus.com/ViewPublisher.php?view_id=1)

Leticia Plancarte, Imperial County Behavioral Health Director, Gabriela Jimenez, Victoria Mansfield, Dr. Gonzales, and Raymundo Gonzales's comments can be found here.

[https://brawley-ca.granicus.com/ViewPublisher.php?view\\_id=1](https://brawley-ca.granicus.com/ViewPublisher.php?view_id=1)

CM Grass comments.

[https://brawley-ca.granicus.com/ViewPublisher.php?view\\_id=1](https://brawley-ca.granicus.com/ViewPublisher.php?view_id=1)

Mayor Rebollar comments.

[https://brawley-ca.granicus.com/ViewPublisher.php?view\\_id=1](https://brawley-ca.granicus.com/ViewPublisher.php?view_id=1)

Robert Trimm's comments can be found here.

[https://brawley-ca.granicus.com/ViewPublisher.php?view\\_id=1](https://brawley-ca.granicus.com/ViewPublisher.php?view_id=1)

Sam Couchman's comments can be found here.

[https://brawley-ca.granicus.com/ViewPublisher.php?view\\_id=1](https://brawley-ca.granicus.com/ViewPublisher.php?view_id=1)

Eric Reyes's comments can be found here.

[https://brawley-ca.granicus.com/ViewPublisher.php?view\\_id=1](https://brawley-ca.granicus.com/ViewPublisher.php?view_id=1)

Mercedes Wheeler's comments can be found here.

[https://brawley-ca.granicus.com/ViewPublisher.php?view\\_id=1](https://brawley-ca.granicus.com/ViewPublisher.php?view_id=1)

Cynthia Mancha's comments can be found here.

[https://brawley-ca.granicus.com/ViewPublisher.php?view\\_id=1](https://brawley-ca.granicus.com/ViewPublisher.php?view_id=1)

CM Kelley's comments can be found here.

[https://brawley-ca.granicus.com/ViewPublisher.php?view\\_id=1](https://brawley-ca.granicus.com/ViewPublisher.php?view_id=1)

Mayor Pro Temp Galvan's comments can be found here.

[https://brawley-ca.granicus.com/ViewPublisher.php?view\\_id=1](https://brawley-ca.granicus.com/ViewPublisher.php?view_id=1)

**4. CONSENT AGENDA:** Items are approved by one motion. Council members or members of the public may request consent items be considered separately at a time determined by the Mayor.

**a. Remove for Discussion:** Minutes for January 7, 2025

CM Kelley's comments can be found here.

[https://brawley-ca.granicus.com/ViewPublisher.php?view\\_id=1](https://brawley-ca.granicus.com/ViewPublisher.php?view_id=1)

**Motion to table minutes. m/s/c Kelley/Monita/5-0**

City Manager Duran's comments can be found here.

[https://brawley-ca.granicus.com/ViewPublisher.php?view\\_id=1](https://brawley-ca.granicus.com/ViewPublisher.php?view_id=1)

**b. Remove for Discussion:** Minutes for January 21, 2025

**Motion to table minutes. m/s/c Kelley/Monita/5-0**

[https://brawley-ca.granicus.com/ViewPublisher.php?view\\_id=1](https://brawley-ca.granicus.com/ViewPublisher.php?view_id=1)

**c. Approved** Accounts Payables: January 4, 2025 to January 17, 2025

**m/s/c Grass/Rebollar 5-0**

**c. Approved to** receive and file fiscal year 2023-2024 Development Impact Fee Reports.

**m/s/c Grass/Rebollar 5-0**

## 5. CITY MANAGER REPORT

- 1) Main Street project status report by Rom Medina, PW Director, and Juny Marmolejo, Project Manager, comments can be found here.

[https://brawley-ca.granicus.com/ViewPublisher.php?view\\_id=1](https://brawley-ca.granicus.com/ViewPublisher.php?view_id=1)

CM Kelley's comments can be found here.

[https://brawley-ca.granicus.com/ViewPublisher.php?view\\_id=1](https://brawley-ca.granicus.com/ViewPublisher.php?view_id=1)

CM Grass's comments can be found here.

[https://brawley-ca.granicus.com/ViewPublisher.php?view\\_id=1](https://brawley-ca.granicus.com/ViewPublisher.php?view_id=1)

Mayor Pro Temp Galvan's comments can be found here.

[https://brawley-ca.granicus.com/ViewPublisher.php?view\\_id=1](https://brawley-ca.granicus.com/ViewPublisher.php?view_id=1)

Mayor Rebollar's comments can be found here.

[https://brawley-ca.granicus.com/ViewPublisher.php?view\\_id=1](https://brawley-ca.granicus.com/ViewPublisher.php?view_id=1)

- 2.) Cristhian Barajas, new Development Services Director.

[https://brawley-ca.granicus.com/ViewPublisher.php?view\\_id=1](https://brawley-ca.granicus.com/ViewPublisher.php?view_id=1)

CM Grass, CM Kelley, Mayor Pro Temp Galvan, and Mayor welcoming comments can be found here.

[https://brawley-ca.granicus.com/ViewPublisher.php?view\\_id=1](https://brawley-ca.granicus.com/ViewPublisher.php?view_id=1)

## 6. STUDY SESSION

- a. Review of current capital improvement carryover projects and discussion of Fiscal Years 2025/26 to 2020/31 Preliminary Proposed Capital Improvement Program and Heavy Equipment.

Silvia Luna's comments regarding the CIP Projects can be found here.

[https://brawley-ca.granicus.com/ViewPublisher.php?view\\_id=1](https://brawley-ca.granicus.com/ViewPublisher.php?view_id=1)

CM Monita, CM Grass, City Manager Duran, Mayor Rebollar, and Rachael Parks Manager, comments regarding the CIP projects can be found here.

[https://brawley-ca.granicus.com/ViewPublisher.php?view\\_id=1](https://brawley-ca.granicus.com/ViewPublisher.php?view_id=1)

## 7. REGULAR BUSINESS

- a. Potential Action to Adopt Resolution rescinding Resolution 2023-27 for the purpose of dissolving the Community Improvement Committee. Presented by Denise Garcia, Special Projects Manager.

**The council rescinded the resolution. m/s/c Kelley/Rebollar/5-0**

CM Kelley and CM Monita's comments regarding the committee moving forward can be found here.

[https://brawley-ca.granicus.com/ViewPublisher.php?view\\_id=1](https://brawley-ca.granicus.com/ViewPublisher.php?view_id=1)



- b. Potential Action to consider whether or not Specific City Committees established, or alternatives should be considered. Presented by John Tang, Interim Assistant City Manager.

Comments by Mayor Rebollar, CM Grass, and City Attorney Smerdon regarding specific City Committees can be found here.

CM Monita – Public Safety Liaison

CM Grass – Healthcare Liaison

CM Kelley – Community Improvements Liaison

Mayor Pro Temp Galvan – Traffic Safety Liaison

Mayor Rebollar – Education Liaison

CM Grass/CM Kelley – Legislative Liaison

City Manager Duran—To confirm, for clarification on the Budget, the Mayor will approach the City Manager or staff member to work on the budget at their request.

[https://brawley-ca.granicus.com/ViewPublisher.php?view\\_id=1](https://brawley-ca.granicus.com/ViewPublisher.php?view_id=1)

- c. Potential Action to approve the Annual Stonegarden Agreement for the FY 2023-2026 and authorize the City Manager or Chief of Police to sign and accept the grant. Presented by John Tang, Commander John Tang.

**Approved m/s/c Grass/Rebollar/5-0**

[https://brawley-ca.granicus.com/ViewPublisher.php?view\\_id=1](https://brawley-ca.granicus.com/ViewPublisher.php?view_id=1)

- d. Potential Action to approve and accept by resolution the procurement of goods and services from Spacesavers and to purchase office furniture from Office 360 and allow the City Manager or Police Chief, or their designated representatives, to execute a service contract on behalf of the City of Brawley. Presented by Commander John Tang. Evidence Technician Francisco Reyes.

CM Monita, CM Grass, and Mayor Rebollar's comments can be found here.

[https://brawley-ca.granicus.com/ViewPublisher.php?view\\_id=1](https://brawley-ca.granicus.com/ViewPublisher.php?view_id=1)

**Approved m/s/c Rebollar/Monita/5-0**

## 8. CITY COUNCIL MEMBER REPORTS

CM Monita

- Ribbon Cutting for the Main Street
- League of Cities Academy
- FAA Fundraiser
- BUHS boys JV Basketball game
- Met with the County Health Department regarding tobacco survey

[https://brawley-ca.granicus.com/ViewPublisher.php?view\\_id=1](https://brawley-ca.granicus.com/ViewPublisher.php?view_id=1)

## CM Grass

- Participated in the tobacco survey
- League of Cities Academy  
[https://brawley-ca.granicus.com/ViewPublisher.php?view\\_id=1](https://brawley-ca.granicus.com/ViewPublisher.php?view_id=1)

## CM Kelley

- League of Cities Academy
- Did a tour of Brawley and visited some of the homeless sites
- Imperial Valley Economic Development Corporation Annual Dinner  
[https://brawley-ca.granicus.com/ViewPublisher.php?view\\_id=1](https://brawley-ca.granicus.com/ViewPublisher.php?view_id=1)

## Mayor Pro Temp Galvan

- Attended EV Charging Station ribbon cutting celebration
- Brawley FAA Dinner
- BUHS Boys Baseball Golf Tournament at Del Rio County Club
- League of Cities Academy  
[https://brawley-ca.granicus.com/ViewPublisher.php?view\\_id=1](https://brawley-ca.granicus.com/ViewPublisher.php?view_id=1)

## Mayor Rebollar

- Going out of town for SCAG Regional Council
- Participated in the homeless point and time count  
[https://brawley-ca.granicus.com/ViewPublisher.php?view\\_id=1](https://brawley-ca.granicus.com/ViewPublisher.php?view_id=1)

## 9. CITY ATTORNEY REPORT

Nothing to Report

**ADJOURNMENT:** 9:25 Returned to Closed Session

---

Ana Gutierrez, City Clerk

# City of Brawley

City Council  
Feb 18, 2025  
Agenda Item No. 4b



# 4b

## STAFF REPORT

**To:** City Council  
**From:** Silvia Luna, Finance Director  
**Prepared by:** Jesse Sanchez, Sr. Accounting Assistant  
**Subject:** Demand check registers processed from Jan 18, 2025 to Jan 31, 2025

### RECOMMENDATION:

Approve demand check registers processed from Jan 18, 2025 to Jan 31, 2025.

### BACKGROUND INFORMATION:

Routine bills and payroll processed between Council meetings included the following:

#### All Bank Codes Check Summary

Payment Type	Payable Count	Payment Count	Discount	Payment
Regular Checks	184	107	0.00	1,444,550.99
Manual Checks	0	0	0.00	0.00
Voided Checks	0	0	0.00	0.00
Bank Drafts	14	14	0.00	110,282.29
EFT's	14	10	0.00	157,624.34
	<b>212</b>	<b>131</b>	<b>0.00</b>	<b>1,712,457.62</b>

Utility refunds included the following:  
None.

### FISCAL IMPACT:

No additional fiscal impact to approve these reports.

4b

**ALTERNATIVES:**

None.

**ATTACHMENTS:**

1. Check Report by Check Number

**REPORT COORDINATED WITH (other than person preparing the staff report):**

None.

**REPORT APPROVAL(S):**

Staff, Title or Consultant, Agency

Jimmy Duran, Chief of Police/Interim City Manager

Silvia Luna, Finance Director

Status – Date of Status

Approved – 02/07/2025

Approved – 02/04/2025



City of Brawley

# 4b.1

## Check Report

By Check Number  
Date Range: 01/18/2025 - 01/31/2025

Vendor Number	Vendor Name	Payment Date	Payment Type	Discount Amount	Payment Amount	Number
Payable #	Payable Type	Post Date	Payable Description	Discount Amount	Payable Amount	
<b>Bank Code: US Bank-US Bank Operating Account</b>						
01665	The Bank of New York Mellon Trust CO N.A.	01/22/2025	EFT	0.00	-192,445.66	858
01977	ESO Solutions Inc	01/24/2025	EFT	0.00	6,076.14	867
<a href="#">ESO-146321</a>	Invoice	01/23/2025	Records management software subscrip...	0.00	6,076.14	
02458	Jennette Company Inc.	01/24/2025	EFT	0.00	97,738.38	868
<a href="#">8</a>	Invoice	01/23/2025	UV System Upgrade	0.00	97,738.38	
01044	Lee & Ro Inc	01/24/2025	EFT	0.00	12,486.68	869
<a href="#">1183-08/19</a>	Invoice	01/23/2025	WWTP Ultra Violet Disinfection Facility Up...	0.00	12,486.68	
01665	The Bank of New York Mellon Trust CO N.A.	01/24/2025	EFT	0.00	192,445.66	870
<a href="#">1-25 BRAWLEY20...</a>	Invoice	01/06/2025	Tax Allocation Refunding Bonds Series 2017	0.00	192,445.66	
02405	Brawley Analytical Inc.	01/31/2025	EFT	0.00	1,104.25	871
<a href="#">000840</a>	Invoice	01/28/2025	Water Testing/Labs 1/8/25	0.00	702.25	
<a href="#">000855</a>	Invoice	01/29/2025	Water Testing/Labs 1/15/25	0.00	402.00	
00248	Brenntag Pacific, Inc.	01/31/2025	EFT	0.00	26,695.46	872
<a href="#">BPI479643</a>	Invoice	01/30/2025	OPEN PO FOR CHEMICALS FY 24-25	0.00	7,866.99	
<a href="#">BPI482366</a>	Invoice	01/30/2025	OPEN PO FOR CHEMICALS FY 24-25	0.00	6,509.02	
<a href="#">BPI485455</a>	Invoice	01/30/2025	OPEN PO FOR CHEMICALS FY 24-25	0.00	5,387.75	
<a href="#">BPI487512</a>	Invoice	01/30/2025	OPEN PO FOR CHEMICALS FY 24-25	0.00	3,906.37	
<a href="#">BPI490194</a>	Invoice	01/30/2025	OPEN PO FOR CHEMICALS FY 24-25	0.00	3,025.33	
02547	Finch, Thornton & Baird, LLP	01/31/2025	EFT	0.00	4,160.00	873
<a href="#">205493</a>	Invoice	01/30/2025	Legal Services	0.00	4,160.00	
01347	Polydyne Inc	01/31/2025	EFT	0.00	9,257.23	874
<a href="#">1892532</a>	Invoice	01/30/2025	Clarifloc WE-1474	0.00	9,257.23	
00145	Vestis Group, Inc.	01/31/2025	EFT	0.00	106.20	875
<a href="#">5220468104</a>	Invoice	01/29/2025	Mats/Dust Mops	0.00	106.20	
02023	Ashworth Leininger Group	01/24/2025	Regular	0.00	9,136.25	305105
<a href="#">39110</a>	Invoice	01/23/2025	Agreement for ALG for the support of pre-...	0.00	5,440.00	
<a href="#">39222</a>	Invoice	01/23/2025	Agreement for ALG for the support of pre-...	0.00	3,696.25	
00176	Auto Zone Inc #2804	01/24/2025	Regular	0.00	32.76	305106
<a href="#">02804276969</a>	Invoice	01/22/2025	Car Wash Shampoo	0.00	13.58	
<a href="#">02804282284</a>	Invoice	01/22/2025	Circuit Fuse Tap	0.00	19.18	
00215	Biometrics4All Inc	01/24/2025	Regular	0.00	8.25	305107
<a href="#">BRAWL0127</a>	Invoice	01/22/2025	RELAY FEES/Parks & Rec/December 2024	0.00	8.25	
00228	Brawley Ace Hardware	01/24/2025	Regular	0.00	340.44	305108
<a href="#">A10784/2</a>	Invoice	01/22/2025	Complete Toilete	0.00	280.14	
<a href="#">A12095/2</a>	Invoice	01/17/2025	LED Bulb	0.00	60.30	
00259	BSN Sports LLC	01/24/2025	Regular	0.00	8,332.80	305109
<a href="#">928363308</a>	Invoice	01/23/2025	Purchase of jerseys for Youth Basketball	0.00	8,332.80	
00299	Canon Financial Services Inc	01/24/2025	Regular	0.00	922.96	305110
<a href="#">36949093</a>	Invoice	01/22/2025	Copier Usage/Contract/PD/Nov 2024	0.00	922.96	
00484	Department of Conservation	01/24/2025	Regular	0.00	1,245.53	305111
<a href="#">12-24</a>	Invoice	01/22/2025	Collected Strong Motion Fees/QE 12/31/24	0.00	1,245.53	
00487	Dept of Toxic Substances Control	01/24/2025	Regular	0.00	4,397.00	305112

Check Report

Date Range: 01/18/2025 - 01/31/2025

Vendor Number	Vendor Name	Payment Date	Payment Type	Discount Amount	Payment Amount	Number
Payable #	Payable Type	Post Date	Payable Description	Discount Amount	Payable Amount	
<a href="#">IM0018253</a>	Invoice	01/22/2025	Hazardous Materials/Facility ID FA000040...	0.00	2,596.00	
<a href="#">IM0018636</a>	Invoice	01/22/2025	Hazardous Materials/Facility ID FA000139...	0.00	1,801.00	
00531	EA Electric	01/24/2025	Regular	0.00	426.51	305113
<a href="#">INV248</a>	Invoice	01/23/2025	Eaton Overload Relays/No labor Included	0.00	426.51	
00727	Green Patch Landscaping Inc	01/24/2025	Regular	0.00	162.68	305114
<a href="#">15902</a>	Invoice	01/22/2025	Tree/Planter Mix	0.00	162.68	
00820	Humane Society of Imperial County	01/24/2025	Regular	0.00	16,000.00	305115
<a href="#">11022024</a>	Invoice	01/23/2025	Humane Society - NOV 2024	0.00	8,000.00	
<a href="#">12042024</a>	Invoice	01/23/2025	Humane Society Dec 2024	0.00	8,000.00	
00791	Imperial Co Transportation Commission	01/24/2025	Regular	0.00	3,332.31	305116
<a href="#">25-10</a>	Invoice	01/21/2025	2nd Qtr Distribution Cost/Membership Fee..	0.00	3,332.31	
02614	Imperial Flying Service, Inc.	01/24/2025	Regular	0.00	2,200.00	305117
<a href="#">01.01.2025</a>	Invoice	01/23/2025	Airport Manager and Fixed Base Operator	0.00	2,200.00	
00805	Imperial Irrigation District	01/24/2025	Regular	0.00	3,911.22	305118
<a href="#">2023-0008</a>	Invoice	01/22/2025	Encroachment Permit 4174	0.00	3,911.22	
00821	Imperial Valley Occupational Medicine	01/24/2025	Regular	0.00	1,024.50	305119
<a href="#">4215</a>	Invoice	01/22/2025	Physicals/S-Ray/Audiogram/Various	0.00	1,024.50	
00861	Jade Security Systems Inc	01/24/2025	Regular	0.00	34.99	305120
<a href="#">0219501</a>	Invoice	01/21/2025	Electronic Monitor Security System/Finan...	0.00	34.99	
02631	Jonathan Sabater	01/24/2025	Regular	0.00	293.25	305121
<a href="#">12-24Travel</a>	Invoice	01/22/2025	Travel Adv/Red Helmet Training/Courses/J...	0.00	293.25	
00995	Kaz-Bros Design Shop	01/24/2025	Regular	0.00	457.93	305122
<a href="#">11748</a>	Invoice	01/22/2025	Custom Cut City of Brawley Sign/Installati...	0.00	457.93	
00979	K-C Welding Rentals Inc	01/24/2025	Regular	0.00	498.83	305123
<a href="#">50255</a>	Invoice	01/21/2025	Safety Boots/Juan Dillon	0.00	285.53	
<a href="#">50343</a>	Invoice	01/23/2025	Safety Boots & Accesories/Jonathan Saha...	0.00	213.30	
01025	LaBrucherie Irrigation Supp LLC	01/24/2025	Regular	0.00	1,474.80	305124
<a href="#">OM44635</a>	Invoice	01/22/2025	Jar Top Diaphragm Assy	0.00	9.05	
<a href="#">OM44647</a>	Invoice	01/22/2025	Anthisiphon Valve Lirritrol	0.00	25.86	
<a href="#">OM44670</a>	Invoice	01/22/2025	Water Sprinkler Station Outdoor Controller	0.00	112.71	
<a href="#">OM44671</a>	Invoice	01/22/2025	Spring Brace Rakes	0.00	104.95	
<a href="#">OM44674</a>	Invoice	01/22/2025	9 volt Baterries	0.00	30.26	
<a href="#">OM44680</a>	Invoice	01/22/2025	Nozzles/Adj Spray	0.00	19.19	
<a href="#">OM44711</a>	Invoice	01/22/2025	Sprinkler Water Valves	0.00	366.57	
<a href="#">OM44712</a>	Invoice	01/22/2025	Sprinklers Water Valves/Pop-up Motor	0.00	548.62	
<a href="#">OM44713</a>	Invoice	01/22/2025	Water Sprinkler Control	0.00	164.00	
<a href="#">OM44772</a>	Invoice	01/22/2025	Repair Kit for Urinal	0.00	47.74	
<a href="#">OM44895</a>	Invoice	01/22/2025	Electrical Tape	0.00	1.05	
<a href="#">OM44911</a>	Invoice	01/23/2025	Couplings/Coup/Capt T	0.00	11.98	
<a href="#">OM44917</a>	Invoice	01/22/2025	Couplings/Water conduct CV Blank	0.00	23.77	
<a href="#">OM44932</a>	Invoice	01/22/2025	Jar Top Diaphragm Assy	0.00	9.05	
01026	Landmark Consultants Inc	01/24/2025	Regular	0.00	2,370.00	305125
<a href="#">LE1224-41</a>	Invoice	01/23/2025	Geotechnical Services for Project 1	0.00	490.00	
<a href="#">LE1324-14</a>	Invoice	01/23/2025	Geotechnical Services for Project 1	0.00	1,880.00	
02386	Margarita Sanchez	01/24/2025	Regular	0.00	100.00	305126
<a href="#">12-24Refund</a>	Invoice	01/22/2025	Facility Request/Lions Center Gym & Kitch...	0.00	100.00	
02634	Maria Padilla	01/24/2025	Regular	0.00	221.65	305127
<a href="#">1-25Travel</a>	Invoice	01/22/2025	Travel Adv/OTS Grant App. Workshop/1/1...	0.00	221.65	
01164	Martin M Melendez	01/24/2025	Regular	0.00	293.25	305128

Check Report

Date Range: 01/18/2025 - 01/31/2025

Vendor Number	Vendor Name	Payment Date	Payment Type	Discount Amount	Payment Amount	Number
Payable #	Payable Type	Post Date	Payable Description	Discount Amount	Payable Amount	
<a href="#">12-24Travel</a>	Invoice	01/22/2025	Travel Adv/Red Helmet Training/Courses...	0.00	293.25	
01183	McNeece Bros Oil Company	01/24/2025	Regular	0.00	293.90	305129
<a href="#">57882</a>	Invoice	01/23/2025	Fuel	0.00	105.77	
<a href="#">57888</a>	Invoice	01/22/2025	Fuel	0.00	188.13	
02295	Nicklaus Engineering Inc.	01/24/2025	Regular	0.00	1,150.00	305130
<a href="#">0039909</a>	Invoice	01/22/2025	Water Tank Tower/Profesional Srvc/Dec ...	0.00	1,150.00	
01279	NuCO2	01/24/2025	Regular	0.00	52.53	305131
<a href="#">78717128</a>	Invoice	01/22/2025	CO2 MK9 Detector/Sensor Kit	0.00	52.53	
01891	NV5 Inc	01/24/2025	Regular	0.00	267.05	305132
<a href="#">412462</a>	Invoice	01/22/2025	Consulting & Ext of Staff Srvc/MP 23-04/...	0.00	267.05	
01282	O'Reilly Auto Parts	01/24/2025	Regular	0.00	107.71	305133
<a href="#">2648-128767</a>	Invoice	01/17/2025	Motor Oil	0.00	107.71	
01315	Parkhouse Tire, Inc	01/24/2025	Regular	0.00	497.99	305134
<a href="#">3030085478</a>	Invoice	01/22/2025	Road/Emergency Service/Cat Backhoe	0.00	130.79	
<a href="#">3030085602</a>	Invoice	01/23/2025	Road Emergency Service/TRK# 1009	0.00	169.85	
<a href="#">3030085628</a>	Invoice	01/23/2025	Road Emergency Service/Backhoe#20	0.00	197.35	
01352	Precision Electric Co Inc	01/24/2025	Regular	0.00	4,924.38	305135
<a href="#">0117742-IN</a>	Invoice	01/22/2025	Labor/Inspect/Diagnose/Repairs/BALDOR ...	0.00	4,924.38	
01489	Rove Engineering Inc	01/24/2025	Regular	0.00	132,687.01	305136
<a href="#">23-088R</a>	Invoice	01/23/2025	5% Retention/Paving from 1st to 9th Street	0.00	132,687.01	
01489	Rove Engineering Inc	01/24/2025	Regular	0.00	961,590.29	305137
<a href="#">6889</a>	Invoice	01/23/2025	Water Line Installation from 1st St. to East...	0.00	307,771.02	
<a href="#">6956</a>	Invoice	01/23/2025	Water Line Installation from 1st St. to East...	0.00	653,819.27	
01596	Southern California Gas Co	01/24/2025	Regular	0.00	61.93	305138
<a href="#">12-24GasSrCtr</a>	Invoice	01/22/2025	Natural Gas Consumption/11/7/24 - 12/10...	0.00	61.93	
01601	Sparkletts	01/24/2025	Regular	0.00	1,343.40	305139
<a href="#">9689234 010125</a>	Invoice	01/22/2025	Bulk Water/Cooler Rentals/Dec 2024	0.00	1,343.40	
02635	Sylvia Rodriguez	01/24/2025	Regular	0.00	100.00	305140
<a href="#">12-24Refund</a>	Invoice	01/22/2025	Facility Request/Lions Center Gym/12/28/...	0.00	100.00	
01668	The Holt Group	01/24/2025	Regular	0.00	18,975.00	305141
<a href="#">24-12-300</a>	Invoice	01/23/2025	FY24-25 Interim City Planning Services	0.00	18,975.00	
01649	T-Mobile USA Inc	01/24/2025	Regular	0.00	283.08	305142
<a href="#">11-24MobileFD#2</a>	Invoice	01/23/2025	Cell Phone Usage/FD#10/21/24 - 11/20/24	0.00	252.28	
<a href="#">12-24TMobilePW</a>	Invoice	01/23/2025	Ipad Usage/PW/11/21/24 - 12/20/24	0.00	30.80	
01732	Valley Pest Services Inc	01/24/2025	Regular	0.00	50.00	305143
<a href="#">14345866 MT</a>	Invoice	01/22/2025	Monthly Pest Controt/Lions Center	0.00	50.00	
01738	Verizon Wireless	01/24/2025	Regular	0.00	255.19	305144
<a href="#">6100473331</a>	Invoice	01/23/2025	Cell Phone Services/FD#2/11/7/24 - 12/6/...	0.00	255.19	
01772	Waxie Sanitary Supply	01/24/2025	Regular	0.00	239.92	305145
<a href="#">82937256</a>	Invoice	01/22/2025	Clean & Soft/Mil Black Max	0.00	239.92	
01668	The Holt Group	01/24/2025	Regular	0.00	40,430.00	305146
<a href="#">24-12-002</a>	Invoice	01/23/2025	Main Street Water Pipeline and Paving Pro...	0.00	40,430.00	
00239	Brawley Police Sergeant's Asso	01/28/2025	Regular	0.00	400.00	305147
<a href="#">INV0005491</a>	Invoice	01/24/2025	Union Dues	0.00	400.00	
00240	Brawley Public Safety Employee	01/28/2025	Regular	0.00	1,920.00	305148
<a href="#">INV0005473</a>	Invoice	01/24/2025	Union Dues	0.00	70.00	

Check Report

Date Range: 01/18/2025 - 01/31/2025

Vendor Number	Vendor Name	Payment Date	Payment Type	Discount Amount	Payment Amount	Number
Payable #	Payable Type	Post Date	Payable Description	Discount Amount	Payable Amount	
<a href="#">INV0005490</a>	Invoice	01/24/2025	Union Dues	0.00	1,850.00	
00287	California State Disbursement	01/28/2025	Regular	0.00	713.86	305149
<a href="#">INV0005476</a>	Invoice	01/24/2025	Child Support Deductions	0.00	713.86	
00660	Franchise Tax Boards State Of California	01/28/2025	Regular	0.00	375.00	305150
<a href="#">INV0005493</a>	Invoice	01/24/2025	Earnings Withholding	0.00	375.00	
00799	Imperial County Sheriff Civil Division	01/28/2025	Regular	0.00	50.00	305151
<a href="#">INV0005477</a>	Invoice	01/24/2025	Earnings Withholdings	0.00	50.00	
01658	Teamsters Local #542	01/28/2025	Regular	0.00	1,208.00	305152
<a href="#">INV0005492</a>	Invoice	01/24/2025	Union Dues	0.00	1,208.00	
01717	United Way of Imperial County	01/28/2025	Regular	0.00	5.00	305153
<a href="#">INV0005488</a>	Invoice	01/24/2025	United Way Deductions	0.00	5.00	
00002	360 Business Products	01/31/2025	Regular	0.00	133.98	305154
<a href="#">WO-45228-1</a>	Invoice	01/29/2025	Laser Labels	0.00	133.98	
00068	All County Fire	01/31/2025	Regular	0.00	95.42	305155
<a href="#">161998</a>	Invoice	01/28/2025	Fire Extinguisher Annual Maitenance/Dev ...	0.00	95.42	
00073	Alliant Insurance Services Inc	01/31/2025	Regular	0.00	1,100.00	305156
<a href="#">1-25Insurance</a>	Invoice	01/30/2025	Special Event Insuance/10/1/24 - 12/31/24	0.00	1,100.00	
00075	Allied Waste Services #467	01/31/2025	Regular	0.00	139,039.68	305157
<a href="#">0467-001735986</a>	Invoice	01/30/2025	Solid Waste Services/January 2025	0.00	139,039.68	
00084	Alsco American Linen Div Steiner Corp	01/31/2025	Regular	0.00	424.40	305158
<a href="#">LYUM1857571</a>	Invoice	01/28/2025	Cleaning Srvcs/Supplies/WTP	0.00	77.14	
<a href="#">LYUM1859872</a>	Invoice	01/29/2025	Cleaning Srvcs/Supplies/WWTP	0.00	129.21	
<a href="#">LYUM1860559</a>	Invoice	01/29/2025	Cleaning Serv/Supplies/City Hall	0.00	37.36	
<a href="#">LYUM1860560</a>	Invoice	01/29/2025	Cleaning Srvcs/Supplies/Admin Rec	0.00	180.69	
00176	Auto Zone Inc #2804	01/31/2025	Regular	0.00	138.91	305159
<a href="#">02804217286</a>	Invoice	01/30/2025	Jump Starter	0.00	105.58	
<a href="#">02804218627</a>	Credit Memo	01/30/2025	Jump Starter	0.00	-105.58	
<a href="#">02804249364</a>	Invoice	01/30/2025	Engine Degreasers & Cleaner	0.00	13.42	
<a href="#">02804261667</a>	Invoice	01/30/2025	Ceramic Car Wash Soap	0.00	17.75	
<a href="#">2804105389</a>	Invoice	01/30/2025	Oil Absorbent/Car Wash Soap	0.00	29.05	
<a href="#">2804814726</a>	Invoice	01/30/2025	Oil Filter/Motor Oil/Interior Cleaner	0.00	78.69	
<a href="#">2804814899</a>	Credit Memo	01/30/2025	Oil Filter	0.00	-17.23	
<a href="#">2804814902</a>	Invoice	01/30/2025	Oil Filter	0.00	17.23	
00184	Babcock Laboratories Inc	01/31/2025	Regular	0.00	1,847.24	305160
<a href="#">CA50177-10480</a>	Invoice	01/28/2025	Water Testing/Labs	0.00	1,794.52	
<a href="#">SINV112646</a>	Invoice	01/28/2025	Finance Charge over invoice CJ40115	0.00	52.72	
00212	Big J Fencing Inc	01/31/2025	Regular	0.00	1,262.08	305161
<a href="#">2501</a>	Invoice	01/29/2025	Fence Slats	0.00	1,262.08	
00215	Biometrics4All Inc	01/31/2025	Regular	0.00	3.75	305162
<a href="#">BRWPD0027</a>	Invoice	01/28/2025	RELAY FEES/November 2024	0.00	3.75	
02263	Brandon Mathew Self	01/31/2025	Regular	0.00	80.00	305163
<a href="#">1-25Basketball</a>	Invoice	01/30/2025	Youth Basketball 2025/Ref/Jan 16	0.00	80.00	
00228	Brawley Ace Hardware	01/31/2025	Regular	0.00	950.52	305164
<a href="#">A11508/2</a>	Invoice	01/28/2025	Storage Tote	0.00	32.31	
<a href="#">A11515/2</a>	Invoice	01/28/2025	Plastic Bucket 5 Gallons	0.00	12.05	
<a href="#">A15779/2</a>	Invoice	01/28/2025	Lawn & Leaf Bag Draw	0.00	28.46	
<a href="#">A16157/2</a>	Invoice	01/28/2025	Hammer Drilling/Plunger/Cleaner Liquid	0.00	29.28	
<a href="#">A16864/2</a>	Invoice	01/28/2025	Bleach	0.00	41.33	
<a href="#">A18312/2</a>	Invoice	01/29/2025	Antifreeze/Towels Shop Packs	0.00	61.59	



Check Report

Date Range: 01/18/2025 - 01/31/2025

Vendor Number	Vendor Name	Payment Date	Payment Type	Discount Amount	Payment Amount	Number
Payable #	Payable Type	Post Date	Payable Description	Discount Amount	Payable Amount	
<a href="#">A18420/2</a>	Invoice	01/29/2025	Wire Brush/Nylon Rope/Linzer Chip Brush...	0.00	177.14	
<a href="#">A18518/2</a>	Invoice	01/29/2025	Spackling for Drywall	0.00	6.45	
<a href="#">A18602/2</a>	Invoice	01/29/2025	Brass Key Duplicates	0.00	38.68	
<a href="#">A18604/2</a>	Invoice	01/29/2025	Floor Patch & Leveler/Joint Knife	0.00	52.78	
<a href="#">A18642/2</a>	Invoice	01/29/2025	Cement Redi-Mix	0.00	301.32	
<a href="#">A19846/2</a>	Invoice	01/29/2025	Cleaning Cloth Pack/Car Wash Soap/Bowl ...	0.00	36.17	
<a href="#">A22166/2</a>	Invoice	01/29/2025	Bags for Trash	0.00	10.33	
<a href="#">J66064/2</a>	Invoice	01/29/2025	Nature Scapes	0.00	122.63	
00259	BSN Sports LLC	01/31/2025	Regular	0.00	256.12	305165
<a href="#">928460694</a>	Invoice	01/29/2025	Jersey/Logo	0.00	256.12	
00299	Canon Financial Services Inc	01/31/2025	Regular	0.00	1,757.78	305166
<a href="#">37627946</a>	Invoice	01/28/2025	Contract Charge/PW/Feb 2025	0.00	400.83	
<a href="#">37628062</a>	Invoice	01/28/2025	Copier Usage/Contract Charge/PW/Dec 2...	0.00	352.18	
<a href="#">37628261</a>	Invoice	01/29/2025	Copier Usage/Contract Charge/WWTP/Jan...	0.00	111.74	
<a href="#">37629587</a>	Invoice	01/29/2025	Copier Usage/Contract Charge/PD/Dec 20...	0.00	893.03	
00301	Canon Solutions America Inc	01/31/2025	Regular	0.00	224.94	305167
<a href="#">4040906507</a>	Invoice	01/28/2025	Maintenance Equipment Usage/January ...	0.00	224.94	
00419	CWEA	01/31/2025	Regular	0.00	239.00	305168
<a href="#">1-25ID478898</a>	Invoice	01/30/2025	Association Membership/Lealie Castaneda...	0.00	239.00	
00485	Department of Justice	01/31/2025	Regular	0.00	397.00	305169
<a href="#">781815</a>	Invoice	01/30/2025	Fed Lvl Volteer-Billed/Dec 2024	0.00	75.00	
<a href="#">787253</a>	Invoice	01/30/2025	Fingerprint Apps/CA/POB/December 2024	0.00	322.00	
02486	Desmond H Thomas	01/31/2025	Regular	0.00	140.00	305170
<a href="#">1-25Basketball</a>	Invoice	01/30/2025	Youth Basketball 2025/Score/Jan 14 & 16	0.00	64.00	
<a href="#">1-25Basketball2</a>	Invoice	01/30/2025	Youth Basketball 2025/Ref/Jan 14 & 21	0.00	76.00	
00520	Downstream Services, Inc	01/31/2025	Regular	0.00	200.00	305171
<a href="#">HM-212800891R...</a>	Invoice	01/30/2025	Hydrant Meter Deposit Refund/SN 21280...	0.00	200.00	
01838	DXP Enterprises Inc	01/31/2025	Regular	0.00	2,965.51	305172
<a href="#">54885375</a>	Invoice	01/30/2025	Mechanical Seal/Rotor/Joint Kit/Stator	0.00	2,965.51	
02266	Emilia Mata	01/31/2025	Regular	0.00	172.00	305173
<a href="#">1-25Basketball</a>	Invoice	01/30/2025	Youth Basketball 2025/Ref/Jan 14,15 & 21	0.00	76.00	
<a href="#">1-25Basketball2</a>	Invoice	01/30/2025	Youth Basketball 2025/Score/Jan 14,15,16...	0.00	96.00	
00569	Empire Southwest LLC	01/31/2025	Regular	0.00	990.00	305174
<a href="#">EPWK0635329</a>	Invoice	01/29/2025	Trouble Shoot Generator Repair/GM00689	0.00	990.00	
02468	Eric Franklin	01/31/2025	Regular	0.00	280.00	305175
<a href="#">1-25Basketball</a>	Invoice	01/30/2025	Youth Basketball 2025/Ref/Jan 14, 16 & 21	0.00	280.00	
00629	Federal Express Corp	01/31/2025	Regular	0.00	19.20	305176
<a href="#">8-736-38256</a>	Invoice	01/30/2025	Postage	0.00	19.20	
00635	Ferguson Enterprises Inc	01/31/2025	Regular	0.00	45.59	305177
<a href="#">5067235</a>	Invoice	01/30/2025	Tank to Bowl Gasket/ABS Toilet Flange Kit	0.00	45.59	
00720	GovConnection Inc	01/31/2025	Regular	0.00	1,317.07	305178
<a href="#">75977841</a>	Invoice	01/28/2025	USB Cable/USB Port Hub/RAM Memory/A...	0.00	362.39	
<a href="#">75983475</a>	Invoice	01/28/2025	Power Strip	0.00	9.10	
<a href="#">76057750</a>	Invoice	01/29/2025	Sit Stand Vertical Lift Workstation	0.00	945.58	
01722	HD Supply, Inc.	01/31/2025	Regular	0.00	1,432.66	305179
<a href="#">INV00580166</a>	Invoice	01/29/2025	Sludge Judge Set/Disposable Wipes Box/H...	0.00	720.43	
<a href="#">INV00586586</a>	Invoice	01/29/2025	Submersible Transmitter	0.00	712.23	
00763	Home Grown Apparel	01/31/2025	Regular	0.00	193.93	305180

Check Report

Date Range: 01/18/2025 - 01/31/2025

Vendor Number	Vendor Name	Payment Date	Payment Type	Discount Amount	Payment Amount	Number
Payable #	Payable Type	Post Date	Payable Description	Discount Amount	Payable Amount	
<a href="#">46088</a>	Invoice	01/29/2025	Pants	0.00	193.93	
02035	iClean Car Wash	01/31/2025	Regular	0.00	3,000.00	305181
<a href="#">BPD-December-2...</a>	Invoice	01/29/2025	December Car Wash/Mo Membership/PD	0.00	1,000.00	
<a href="#">BPD-November-2...</a>	Invoice	01/29/2025	November Car Wash/Mo Membership/PD	0.00	1,000.00	
<a href="#">BPD-October-20...</a>	Invoice	01/29/2025	October Car Wash/Mo Membership/PD	0.00	1,000.00	
00832	Industrial Mechanical Services	01/31/2025	Regular	0.00	740.00	305182
<a href="#">9972</a>	Invoice	01/29/2025	Set 1 gearbox in place/Boom Truck	0.00	740.00	
00861	Jade Security Systems Inc	01/31/2025	Regular	0.00	72.98	305183
<a href="#">0217656</a>	Invoice	01/29/2025	Monitoring Electronic Security System/Lib...	0.00	34.99	
<a href="#">0219502</a>	Invoice	01/29/2025	Monitoring Electroninc Security System/Li...	0.00	37.99	
02410	Javier Martinez	01/31/2025	Regular	0.00	293.25	305184
<a href="#">11-24Travel</a>	Invoice	01/30/2025	Travel Adv/CNOA Training Institute Expo...	0.00	293.25	
02463	Jessica Ubence	01/31/2025	Regular	0.00	160.00	305185
<a href="#">1-25Basketball</a>	Invoice	01/30/2025	Youth Basketball 2025/Score/Jan 14, 15, 1...	0.00	160.00	
00927	Jonathan Blackstone	01/31/2025	Regular	0.00	643.32	305186
<a href="#">2-25Travel</a>	Invoice	01/30/2025	Travel Adj/2025 Southern Post Symposio...	0.00	643.32	
00995	Kaz-Bros Design Shop	01/31/2025	Regular	0.00	404.04	305187
<a href="#">11747</a>	Invoice	01/29/2025	Signs Installed on Lion Center	0.00	404.04	
00979	K-C Welding Rentals Inc	01/31/2025	Regular	0.00	406.15	305188
<a href="#">207421</a>	Invoice	01/28/2025	Tap/Bolts & Nuts	0.00	163.78	
<a href="#">207557</a>	Invoice	01/29/2025	7/8"-9 Die tool	0.00	225.14	
<a href="#">50475</a>	Invoice	01/29/2025	Shop Towels Pack	0.00	17.23	
01025	LaBrucherie Irrigation Supp LLC	01/31/2025	Regular	0.00	1,262.07	305189
<a href="#">296367c</a>	Invoice	01/28/2025	Pump 115v	0.00	412.08	
<a href="#">OM44877</a>	Invoice	01/28/2025	Single Station Controller/Plastic Adapter/S...	0.00	157.89	
<a href="#">OM44946</a>	Invoice	01/28/2025	Pump 20FT	0.00	644.84	
<a href="#">OM45162</a>	Invoice	01/29/2025	Pump with Hose	0.00	47.26	
01183	McNeece Bros Oil Company	01/31/2025	Regular	0.00	250.84	305190
<a href="#">358555</a>	Invoice	01/28/2025	Fuel	0.00	250.84	
01231	Motorola Solutions Inc	01/31/2025	Regular	0.00	36,799.56	305191
<a href="#">8282033260</a>	Invoice	01/30/2025	(6) HANDHELD RADIOS FOR PATROL (CO...	0.00	36,799.56	
01262	NewCastle Farms LLC	01/31/2025	Regular	0.00	3,529.58	305192
<a href="#">14345</a>	Invoice	01/30/2025	Repairs on Gearbox	0.00	3,529.58	
01288	Ojeda Industries	01/31/2025	Regular	0.00	693.92	305193
<a href="#">55537</a>	Invoice	01/28/2025	Petroleum Suction-Tank/Center Punch Cl...	0.00	693.92	
01311	Packers Mini Storage	01/31/2025	Regular	0.00	126.50	305194
<a href="#">2-25Storage</a>	Invoice	01/30/2025	Storage Unit B209/February 2025	0.00	126.50	
01379	R & K Air Conditioning	01/31/2025	Regular	0.00	1,666.51	305195
<a href="#">52264</a>	Invoice	01/28/2025	Repair AC Unit/Blower/Airport	0.00	1,037.13	
<a href="#">52367</a>	Invoice	01/28/2025	AC Unit Repair/Brackets/PW	0.00	629.38	
02328	SD Electric and Hvacv/R Inc	01/31/2025	Regular	0.00	713.89	305196
<a href="#">1323</a>	Invoice	01/29/2025	Plumbing Services/Drain Clog	0.00	713.89	
02005	Sirah Overton	01/31/2025	Regular	0.00	208.00	305197
<a href="#">1-25Basketball</a>	Invoice	01/30/2025	Youth Basketball 2025/Score/Jan 14, 15, 1...	0.00	208.00	
01596	Southern California Gas Co	01/31/2025	Regular	0.00	85.21	305198
<a href="#">1-25GasPD</a>	Invoice	01/29/2025	Natural Gas Consumption/12/10/24 - 1/9/...	0.00	25.30	
<a href="#">1-25GasSrCtr</a>	Invoice	01/29/2025	Natural Gas Consumption/12/10/24 - 01/...	0.00	59.91	

Check Report

Date Range: 01/18/2025 - 01/31/2025

Vendor Number Payable #	Vendor Name Payable Type	Post Date	Payment Date Payable Description	Payment Type	Discount Amount Discount Amount	Payment Amount Payable Amount	Number
01601 <a href="#">22780746 011025</a>	Sparkletts Invoice	01/28/2025	01/31/2025 Bulk Water/Cooler Rental/PD/Dec 2024	Regular	0.00 0.00	6.99 6.99	305199
01604 <a href="#">10629</a>	Sports Boosters Inc Invoice	01/29/2025	01/31/2025 Sponsor Ad/Brawley High School	Regular	0.00	99.00	305200
01884 <a href="#">160221252-0001</a>	Sunbelt Rentals Invoice	01/28/2025	01/31/2025 Hand Held Blower Repairs	Regular	0.00	183.02	305201
01666 <a href="#">INV102983</a>	The Counseling Team Invoice	01/29/2025	01/31/2025 Psychological Assessments	Regular	0.00	400.00	305202
01676 <a href="#">1-25CPR</a>	Thomas Armstrong CPR Invoice	01/30/2025	01/31/2025 BLS Provider CPR Cards	Regular	0.00	125.00	305203
01974 <a href="#">2221</a>	Total Technology Inc Invoice	01/28/2025	01/31/2025 EOC UPS Repl/Remove & Install Old UPS &...	Regular	0.00	1,049.00	305204
01712 <a href="#">00002XX926025</a> <a href="#">00002XX926035</a>	United Parcel Service Inc Invoice Invoice	01/28/2025 01/30/2025	01/31/2025 Postage Postage	Regular	0.00 0.00	92.33 53.24 39.09	305205
01732 <a href="#">14342380 MT</a> <a href="#">14343380 MT</a> <a href="#">14346459 MT</a> <a href="#">14346460 MT</a>	Valley Pest Services Inc Invoice Invoice Invoice Invoice	01/29/2025 01/28/2025 01/30/2025 01/30/2025	01/31/2025 Monthly Pest Control/Planning Monthly Pest Control/WTP Monthly Pest Control/City Hall Rodent Control/City Hall	Regular	0.00 0.00 0.00 0.00	270.00 50.00 85.00 50.00 85.00	305206
01738 <a href="#">6102917448</a> <a href="#">6102917454</a>	Verizon Wireless Invoice Invoice	01/28/2025 01/28/2025	01/31/2025 Mobile iPads Camaras/PW/12/7/24 - 1/6/... Cell Phone Services/City Council/12/7/24 -...	Regular	0.00 0.00	664.41 489.45 174.96	305207
01766 <a href="#">9336698718</a>	W.W. Grainger Inc Invoice	01/28/2025	01/31/2025 Life Jackets	Regular	0.00	389.71	305208
01768 <a href="#">0041 2748 6893 ...</a> <a href="#">3275 8573 2181 ...</a> <a href="#">5714 3011 0517 ...</a> <a href="#">8669 7648 9487 ...</a>	Wal-Mart Stores Inc #01-1555 Invoice Invoice Invoice Invoice	01/30/2025 01/30/2025 01/30/2025 01/29/2025	01/31/2025 18 GallonTotes Food/Snacks/Drinks Bandages/Gauze Pads/Receipt Book Party Bags/Wooden Stick/Candies	Regular	0.00 0.00 0.00 0.00	299.27 19.33 156.67 19.32 103.95	305209
01780 <a href="#">0011964714</a>	Westair Gases & Equipment Inc Invoice	01/29/2025	01/31/2025 Medical Oxygen/Cylinder Rental	Regular	0.00	247.37	305210
01706 <a href="#">12232024</a>	U.S. Bank Corporate Invoice	01/30/2025	01/31/2025 US Bank Credit Card Charges	Regular	0.00	8,763.14	305211
00031 <a href="#">INV0005471</a>	Aflac Inc Invoice	01/24/2025	01/24/2025 Cancer/ICU/Disability Withheld	Bank Draft	0.00	1,231.39	DFT0003540
00031 <a href="#">INV0005472</a>	Aflac Inc Invoice	01/24/2025	01/24/2025 Cancer/ICU/Disability Withheld	Bank Draft	0.00	1,533.67	DFT0003541
01255 <a href="#">INV0005480</a>	National Plan Coordinators Invoice	01/24/2025	01/24/2025 Def Compensation/Plan #340233-01	Bank Draft	0.00	1,130.00	DFT0003546
01257 <a href="#">INV0005481</a>	Nationwide Retirement Solution Invoice	01/24/2025	01/24/2025 Def Compensation/Entity #05270	Bank Draft	0.00	10.00	DFT0003547
00233 <a href="#">INV0005489</a>	Brawley Firefighters Local #19 Invoice	01/24/2025	01/24/2025 Union Dues Fire Assoc	Bank Draft	0.00	845.00	DFT0003554
00836 <a href="#">INV0005494</a>	Internal Revenue Service Invoice	01/24/2025	01/24/2025 Federal Taxes	Bank Draft	0.00	26,051.78	DFT0003555
00836	Internal Revenue Service	01/24/2025	01/24/2025 Federal Taxes	Bank Draft	0.00	12,451.70	DFT0003556

Check Report

Date Range: 01/18/2025 - 01/31/2025

Vendor Number	Vendor Name	Payment Date	Payment Type	Discount Amount	Payment Amount	Number
Payable #	Payable Type	Post Date	Payable Description	Discount Amount	Payable Amount	
<a href="#">INV0005495</a>	Invoice	01/24/2025	Medicare Taxes	0.00	12,451.70	
00836	Internal Revenue Service	01/24/2025	01/24/2025 Bank Draft	0.00	53,241.70	DFT0003557
<a href="#">INV0005496</a>	Invoice	01/24/2025	Social Security Taxes	0.00	53,241.70	
00571	Employment Development Dept	01/24/2025	01/24/2025 Bank Draft	0.00	12,520.23	DFT0003558
<a href="#">INV0005497</a>	Invoice	01/24/2025	State Taxes	0.00	12,520.23	
00836	Internal Revenue Service	01/24/2025	01/24/2025 Bank Draft	0.00	402.54	DFT0003562
<a href="#">INV0005498</a>	Invoice	01/24/2025	Federal Taxes	0.00	402.54	
00836	Internal Revenue Service	01/24/2025	01/24/2025 Bank Draft	0.00	53.06	DFT0003563
<a href="#">INV0005499</a>	Invoice	01/24/2025	Medicare Taxes	0.00	53.06	
00836	Internal Revenue Service	01/24/2025	01/24/2025 Bank Draft	0.00	226.88	DFT0003564
<a href="#">INV0005500</a>	Invoice	01/24/2025	Social Security Taxes	0.00	226.88	
00571	Employment Development Dept	01/24/2025	01/24/2025 Bank Draft	0.00	182.34	DFT0003565
<a href="#">INV0005501</a>	Invoice	01/24/2025	State Taxes	0.00	182.34	
00277	California Department of Tax & Fee Administrat	01/21/2025	01/21/2025 Bank Draft	0.00	402.00	DFT0003566
<a href="#">12-24Sales Tax</a>	Invoice	01/30/2025	Q4 Sales & Use Tax Return/Period 10/1/24...	0.00	402.00	

Bank Code US Bank Summary

Payment Type	Payable Count	Payment Count	Discount	Payment
Regular Checks	184	107	0.00	1,444,550.99
Manual Checks	0	0	0.00	0.00
Voided Checks	0	0	0.00	0.00
Bank Drafts	14	14	0.00	110,282.29
EFT's	14	10	0.00	157,624.34
	<b>212</b>	<b>131</b>	<b>0.00</b>	<b>1,712,457.62</b>

### All Bank Codes Check Summary

Payment Type	Payable Count	Payment Count	Discount	Payment
Regular Checks	184	107	0.00	1,444,550.99
Manual Checks	0	0	0.00	0.00
Voided Checks	0	0	0.00	0.00
Bank Drafts	14	14	0.00	110,282.29
EFT's	14	10	0.00	157,624.34
	<b>212</b>	<b>131</b>	<b>0.00</b>	<b>1,712,457.62</b>

### Fund Summary

Fund	Name	Period	Amount
999	POOLED CASH	1/2025	1,712,457.62
			<b>1,712,457.62</b>

City Council  
 February 18, 2025  
 Agenda Item 4c.

# STAFF REPORT

**To:** City Council  
**From:** Silvia Luna, Finance Director  
**Prepared by:** Veronica Alvarado, Temp. Asst. Finance Director  
**Subject:** First Quarter Fiscal Year 2024/25 Treasury Report

**RECOMMENDATION:**

Receive and file the First Quarter Fiscal Year 2024/25 Treasury Report for Quarter Ended September 30, 2024.

**BACKGROUND INFORMATION:**

The total par value of the portfolio decreased by \$5,732,346.73 from \$84,559,894.41 at the end of June 2024 to \$78,827,547.68 at the end of September 2024. The decrease reflects operational activity throughout the quarter. The portfolio is within policy limits for investment types, total allocation by type and within guidelines for investment ratings.

Investment Type	Par Value	% of Portfolio	Policy Limit
Cash	\$22,454,592.20	33.89%	No limit
LAIF	11,465,737.91	13.41%	Up to \$75,000,000.00
Non-negotiable CD's	4,587,217.57	5.42%	Up to 30% of portfolio
Negotiable CD's	15,443,000.00	17.68%	Up to 30% of portfolio
Government Bonds	4,240,000.00	5.61%	Up to 80% of portfolio
U.S. Treasury Securities	17,367,000.00	20.12%	Up to 80% of portfolio
State Obligations	970,000.00	1.15%	Up to 80% of portfolio
Medium Term Notes	2,300,000.00	2.72%	Up to 30% of portfolio
<b>TOTAL</b>	<b>\$78,827,547.68</b>	<b>100.00%</b>	

Throughout the quarter the following investment transactions occurred:

Matured/Redeemed Investments			
Investment Type	Maturity Date	Par Value	Yield
Morgan Stanley Private Bank	07/05/24	247,000.00	2.31
United States Treasury Bills	08/08/24	5,250,000.00	5.12
Federal National Mortgage Assoc	09/26/24	500,000.00	2.65
	<b>TOTAL</b>	<b>\$5,997,000.00</b>	

Purchased Investments			
Investment Type	Purchase Date	Par Value	Yield
Texas Exchange Bank	09/06/24	249,000.00	3.70
Peoples Bank	09/12/24	245,000.00	3.70
United States Treasury	08/08/24	5,600,000.00	4.78
<b>TOTAL</b>		<b>\$6,094,000.00</b>	

As of September 30, 2024, the City’s average investment portfolio yield was 2.91% down 0.03% from 2.94% at June 30, 2024 and the qualified investment Market Rates were as follows:

Type of Investment	Market Rate
LAIF	4.71%
3-Year Treasury	3.58%
5-Year Treasury	3.58%

Looking Ahead

The City Treasurer follows a “buy and hold” Investment Policy, unless it is fiscally advantageous to actively trade outside of maturity dates. In the short term, the Treasurer will invest in LAIF (local agency investment fund), a State investment fund. Longer term investments may include Government Sponsored Enterprise (agencies) securities, U.S. Treasuries, Corporate Notes, and Negotiable Certificates of Deposits. All investments recognize both immediate and long-term cash flow needs, and there is sufficient liquidity in the portfolio to meet expenditure requirements for the next six months.

**FISCAL IMPACT:**

None.

**ALTERNATIVES:**

No alternatives are recommended this Report is a requirement under the State of California Government Code §53646.

**ATTACHMENTS:**

- 1. Investment Portfolio Report as of September 30, 2024

**REPORT COORDINATED WITH (other than person preparing the staff report):**

**REPORT APPROVAL(S):**

Staff, Title or Consultant, Agency  
 Jimmy Duran, Interim City Manager  
 Silvia Luna, Finance Director

Status – Date of Status  
 Approved – 02/06/2025  
 Approved – 01/31/2025



**CITY OF BRAWLEY**  
**INVESTMENT PORTFOLIO REPORT**  
**As of September 30, 2024**

4c.1

Cash	Financial Institution	Par Value	Market Value	% Yield	Quarterly Earnings	% of Portfolio	Purchase Date	Maturity Date
	US Bank	\$ 22,274,233.69	\$ 22,274,233.69	0.00	\$ -		N/A	N/A
	Community Valley Bank - Library	\$ 50,526.32	\$ 50,526.32	0.50	\$ 64.98		N/A	N/A
	Multi-Bank Securities	\$ 129,832.19	\$ 129,832.19	0.00	\$ -		N/A	N/A
	<b>Total Cash</b>	<b>\$ 22,454,592.20</b>	<b>\$ 22,454,592.20</b>	<b>0.17</b>	<b>\$ 64.98</b>	<b>28.49%</b>		

	Local Agency Investment Fund (LAIF)	\$ 11,465,737.91	\$ 11,489,369.76	4.71	\$ 135,971.49	14.55%	N/A	N/A
--	-------------------------------------	------------------	------------------	------	---------------	--------	-----	-----

**Non-Negotiable Certificates of Deposit (sorted by maturity date)**

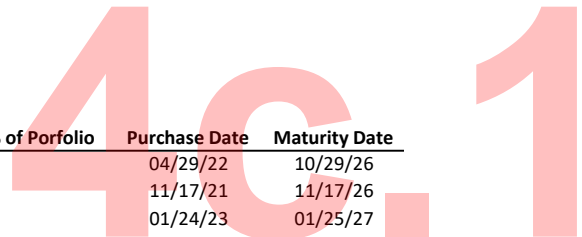
Financial Institution	Par Value	Market Value	% Yield	Quarterly Earnings	% of Portfolio	Purchase Date	Maturity Date
First Imperial Credit Union	\$ 1,014,989.33	\$ 1,014,989.33	2.550	\$ 7,293.65		03/09/23	09/09/24
First Imperial Credit Union	\$ 1,014,989.33	\$ 1,014,989.33	2.550	\$ 7,293.65		03/09/23	09/09/24
Community Valley Bank	\$ 1,125,041.67	\$ 1,125,041.67	4.080	\$ 11,399.62		06/10/24	06/10/25
First Imperial Credit Union	\$ 910,550.73	\$ 910,550.73	3.050	\$ 7,224.76		09/09/23	09/09/24
Sun Community Federal Credit Union	\$ 521,646.51	\$ 521,646.51	4.250	\$ 5,637.39		12/01/23	12/01/24
<b>Total Non-Negotiable Certificates of Deposit</b>	<b>\$ 4,587,217.57</b>	<b>\$ 4,587,217.57</b>	<b>3.30</b>	<b>\$ 38,849.07</b>	<b>5.82%</b>		

**Negotiable Certificates of Deposit (sorted by maturity date)**

CUSIP	Financial Institution	Par Value	Market Value	% Yield	Estimated Qtrly Earnings	% of Portfolio	Purchase Date	Maturity Date
9497633C8	Wells Fargo Bank	\$ 249,000.00	\$ 248,982.57	4.61	\$ 2,863.50		10/28/22	10/28/24
499724AK8	Knoxville TVA Employees Cr Union	\$ 245,000.00	\$ 243,953.85	1.99	\$ 1,194.38		11/26/19	11/26/24
538036HP2	Live Oak BKG CO Wilmington NC	\$ 249,000.00	\$ 246,888.48	1.89	\$ 1,151.63		01/24/20	01/20/25
59013KFJ0	Merrick Bank South Jordan UT	\$ 249,000.00	\$ 246,661.89	1.85	\$ 1,120.50		01/31/20	01/31/25
75472RBB6	Raymond James Bank St Petersburg FL	\$ 247,000.00	\$ 244,317.58	1.80	\$ 1,080.63		02/14/20	02/14/25
02554DBQ9	American Eagle Bank Chicago IL	\$ 249,000.00	\$ 245,182.83	1.14	\$ 684.75		03/13/20	03/13/25
73319FAF6	Poppy Bank Santa Rosa CA	\$ 245,000.00	\$ 241,146.15	1.14	\$ 673.75		03/18/20	03/18/25
29260MAV7	Encore Bank Little Rock AR	\$ 249,000.00	\$ 245,006.04	1.19	\$ 715.88		03/25/20	03/25/25
07815ABE6	Bell Bank Fargo ND	\$ 245,000.00	\$ 240,991.80	1.14	\$ 673.75		03/26/20	03/26/25
79772FAF3	San Francisco Fed Cr Union CA	\$ 245,000.00	\$ 240,974.65	1.14	\$ 673.75		03/27/20	03/27/25
694231AC5	Pacific Enterprise Bank Irvine CA	\$ 248,000.00	\$ 243,930.32	1.19	\$ 713.00		03/31/20	03/31/25
48128WPG4	JP Morgan Chase Bank	\$ 245,000.00	\$ 242,503.45	2.56	\$ 1,531.25		04/08/22	04/08/25
32110YVZ5	First National Bank America	\$ 245,000.00	\$ 242,133.50	2.26	\$ 1,347.50		04/12/22	04/11/25
254673B70	Discover Bank Greenwood	\$ 245,000.00	\$ 242,758.25	2.86	\$ 1,715.00		04/27/22	04/28/25
22551KAB8	Credit Union Allen Tex SH CTF	\$ 245,000.00	\$ 243,204.15	3.37	\$ 2,021.25		07/22/22	07/22/25
33847E3W5	Flagstar Bank Troy MI	\$ 247,000.00	\$ 239,970.38	0.63	\$ 370.50		07/22/20	07/22/25
25460FDU7	Direct Federal Credit Union Mass.	\$ 249,000.00	\$ 251,029.35	4.71	\$ 2,925.75		11/03/22	11/03/25
20786ADN2	Connection BK Englewood Cliffs	\$ 245,000.00	\$ 236,260.85	0.80	\$ 459.38		11/24/21	11/24/25
849061AA4	Spokane Teachers Credit Union	\$ 245,000.00	\$ 247,981.65	4.99	\$ 3,062.50		11/23/22	11/24/25
06251A2Q2	Bank Hapoalim New York, NY	\$ 249,000.00	\$ 239,025.06	0.53	\$ 311.25		12/15/20	12/15/25
530520AA3	Liberty First Credit Union	\$ 249,000.00	\$ 251,059.23	4.57	\$ 2,832.38		01/17/23	01/20/26
0605XCB6	Bank Amer NA	\$ 145,000.00	\$ 146,940.10	4.81	\$ 1,740.00		04/04/24	04/06/26
90348JR93	UBS Salt Lake City	\$ 249,000.00	\$ 236,161.56	1.03	\$ 591.38		09/11/21	08/11/26

**Negotiable Certificates of Deposit (sorted by maturity date - Continued)**





CUSIP	Financial Institution	Purchase Price	Market Value	% Yield	Estimated Qtrly Earnings	% of Porfolio	Purchase Date	Maturity Date
20056QUV3	Commerce Bank Geneva	\$ 245,000.00	\$ 238,149.80	2.54	\$ 1,470.00		04/29/22	10/29/26
14042TDW4	Capital One Bank	\$ 245,000.00	\$ 231,534.80	1.20	\$ 673.75		11/17/21	11/17/26
07181JAY0	Baxter Credit Union	\$ 249,000.00	\$ 252,894.36	4.51	\$ 2,801.25		01/24/23	01/25/27
919853LA7	Valley Natl Bank	\$ 244,000.00	\$ 248,528.64	4.63	\$ 2,806.00		04/02/24	04/02/27
14042RQU8	Capital One National Assn.	\$ 246,000.00	\$ 240,553.56	3.04	\$ 1,783.50		04/27/22	04/27/27
633368GB5	National Bank Comm.	\$ 245,000.00	\$ 238,686.35	2.9	\$ 1,684.38		04/29/22	04/29/27
02589ACQ3	American Express National Bank	\$ 246,000.00	\$ 241,960.68	3.28	\$ 1,937.25		05/11/22	05/11/27
06740KQE0	Barclays Bank Del Retail	\$ 246,000.00	\$ 241,052.94	3.14	\$ 1,845.00		05/11/22	05/11/27
50625LBJ1	Lafayette Fed Credit Union	\$ 245,000.00	\$ 241,604.30	3.38	\$ 1,990.63		05/25/22	05/25/27
20825WAX8	Connexus Credit Union	\$ 245,000.00	\$ 240,695.35	3.24	\$ 1,898.75		05/26/22	05/26/27
61690UK41	Morgan Stanley Bank	\$ 245,000.00	\$ 241,222.10	3.33	\$ 1,960.00		05/26/22	05/26/27
856283Z74	State Bank India Chicago	\$ 245,000.00	\$ 242,109.00	3.47	\$ 2,051.88		06/14/22	06/14/27
88413QDL9	Third Federal Savings	\$ 245,000.00	\$ 243,017.95	3.61	\$ 2,143.75		06/28/22	06/28/27
87165FP81	Synchrony Bank Retail CTF Dep	\$ 245,000.00	\$ 242,942.00	3.61	\$ 2,143.75		09/09/22	09/09/27
89235MPC9	Toyota Financial Savings Bank	\$ 245,000.00	\$ 243,610.85	3.7	\$ 2,205.00		09/16/22	09/16/27
052392BT3	Austin Telco Federal Credit Union	\$ 249,000.00	\$ 249,000.00	3.88	\$ 2,365.50		09/21/22	09/21/27
90352RCS2	US Alliance Federal Credit Union RYE NY	\$ 249,000.00	\$ 248,295.33	3.79	\$ 2,303.25		09/29/22	09/29/27
560507AS4	Maine Savings FCU	\$ 248,000.00	\$ 258,354.00	5.07	\$ 3,224.00		11/08/23	11/08/27
31033AAK9	Farmers St Bank	\$ 245,000.00	\$ 246,337.70	3.96	\$ 2,388.75		09/29/22	01/19/28
37892MAC8	Global Federal Credit Union	\$ 249,000.00	\$ 256,776.27	4.55	\$ 2,863.50		04/10/23	04/17/28
25844MAS7	Dort Financial Credit Union	\$ 247,000.00	\$ 251,786.86	4.26	\$ 2,624.38		04/10/23	04/21/28
313812EK1	Federal Savings Bank Chicago	\$ 247,000.00	\$ 256,386.00	4.70	\$ 2,902.25		07/05/24	06/26/28
51828MAL8	Latino Community Credit Union	\$ 249,000.00	\$ 262,244.31	4.36	\$ 2,801.25		06/22/23	06/27/28
64017ABA1	Neighbors FCU	\$ 246,000.00	\$ 258,329.52	4.87	\$ 3,075.00		07/26/23	07/26/28
89854LAD5	TTCU Fed Credit Union	\$ 248,000.00	\$ 260,429.76	4.87	\$ 3,100.00		07/26/23	07/26/28
52171MAL9	Leaders Credit Union	\$ 248,000.00	\$ 260,960.48	4.86	\$ 3,100.00		08/30/23	08/30/28
291916AG9	Empower Fed Cr Union	\$ 248,000.00	\$ 262,473.28	4.93	\$ 3,162.00		10/23/23	10/23/28
58404DTS0	Medallion Bank	\$ 248,000.00	\$ 261,587.92	4.86	\$ 3,100.00		10/30/23	10/30/28
91739JAD7	Utah First Fed Credit Union	\$ 248,000.00	\$ 262,530.32	4.93	\$ 3,162.00		10/30/23	10/30/28
98138MCA6	Workers Fed Credit Union	\$ 248,000.00	\$ 263,470.24	5.01	\$ 3,224.00		10/30/23	10/30/28
92023CAJ2	Valleystar Credit Union	\$ 248,000.00	\$ 263,504.96	5.01	\$ 3,224.00		11/08/23	11/08/28
20347MAX9	Community BK & TR	\$ 243,000.00	\$ 256,581.27	4.9	\$ 3,067.88		11/10/23	11/10/28
01882MAH5	Alliant Credit Union	\$ 248,000.00	\$ 264,978.08	5.12	\$ 3,317.00		11/15/23	11/15/28
42728MAC8	Heritage Community Credit Union	\$ 248,000.00	\$ 264,028.24	5.05	\$ 3,255.00		11/15/23	11/15/28
68405VBN8	Optum Bank	\$ 243,000.00	\$ 256,151.16	4.86	\$ 3,037.50		11/15/23	11/15/28
17783PAK7	City Federal Credit Union	\$ 249,000.00	\$ 253,158.30	4.05	\$ 2,490.00		01/18/24	01/18/29
585899AG2	Members TR Southwest FCU	\$ 249,000.00	\$ 253,158.30	4.05	\$ 2,490.00		01/19/24	01/19/29
91527PCF2	Univest National Bank	\$ 245,000.00	\$ 251,590.50	4.25	\$ 2,603.13		03/13/24	03/13/29
88241TSW1	Texas Exchange Bank	\$ 249,000.00	\$ 249,632.46	3.7	\$ 2,303.25		09/06/24	09/06/29
710819BX0	Peoples Bank	\$ 245,000.00	\$ 245,573.30	3.7	\$ 2,266.25		09/12/24	09/12/29
<b>Total Negotiable Certificates of Deposit</b>		<b>\$ 15,443,000.00</b>	<b>\$ 15,552,944.93</b>	<b>3.52</b>	<b>\$ 131,298.38</b>	<b>19.59%</b>		

**U.S. Treasury Securities**

CUSIP	Issuer	Purchase Price	Market Value	% Yield	Estimated Qtrly Earnings	% of Portfolio	Purchase Date	Maturity Date
912797KU0	United States Treasury Bills	\$ 1,050,000.00	\$ 1,047,816.00	5.15			04/25/24	10/17/24
912797LF2	United States Treasury Bills	\$ 10,717,000.00	\$ 10,629,442.11	5.13			06/13/24	12/05/24
912797JR9	United States Treasury Bills	\$ 5,600,000.00	\$ 5,521,488.00	4.78			08/08/24	01/23/25
<b>Total U.S. Treasury Securities</b>		<b>\$ 17,367,000.00</b>	<b>\$ 17,198,746.11</b>	<b>5.02</b>		<b>22.03%</b>		

**U.S. Government Bonds (sorted by maturity date)**

CUSIP	Issuer	Purchase Price	Market Value	% Yield	Estimated Qtrly Earnings	% of Portfolio	Purchase Date	Maturity Date	Moody/S&P
3130AQ5R0	Federal Home Loan Bank	\$ 500,000.00	\$ 495,625.00	1.18	\$ 1,437.50		12/30/21	12/30/24	Aaa/AA+
3137EAEX3	Federal Home Loan Bank	\$ 350,000.00	\$ 337,893.50	0.40	\$ 328.13		11/08/21	09/23/25	Aaa/AA+
3130AKQ74	Federal Home Loan Bank	\$ 350,000.00	\$ 335,510.00	0.67	\$ 546.88		01/22/21	01/22/26	Aaa/AA+
3130ALKL7	Federal Home Loan Bank	\$ 245,000.00	\$ 234,200.40	0.91	\$ 520.63		03/25/21	03/25/26	Aaa/AA+
3130ALYC2	Federal Home Loan Bank	\$ 245,000.00	\$ 234,695.30	1.22	\$ 698.25		04/21/21	04/29/26	Aaa/AA+
3130ANHX1	Federal Home Loan Bank	\$ 1,050,000.00	\$ 993,604.50	0.95	\$ 2,296.88		08/19/21	08/19/26	Aaa/AA+
3134GXX90	Federal Home Loan Mortgage Corp.	\$ 500,000.00	\$ 500,010.00	4.57	\$ 5,625.00		09/23/22	09/23/27	Aaa/AA+
3130B0B04J5	Federal Home Loan Bank	\$ 1,000,000.00	\$ 1,008,120.00	4.99	\$ 12,500.00		02/21/24	02/20/29	Aaa/AA+
<b>Total U.S. Government Bonds</b>		<b>\$ 4,240,000.00</b>	<b>\$ 4,139,658.70</b>	<b>1.65</b>	<b>\$ 23,953.25</b>	<b>5.38%</b>			

**CA State Obligations (sorted by maturity date)**

CUSIP	Issuer	Purchase Price	Market Value	% Yield	Estimated Qtrly Earnings	% of Portfolio	Purchase Date	Maturity Date	Moody/S&P
13063CLW8	CA State GO Bonds	\$ 665,000.00	\$ 665,000.00	4.95	\$ 8,312.50		05/04/20	10/01/24	Aa2/AA-
13063DFT0	CA State Var Purp GO Ref Bonds	\$ 100,000.00	\$ 100,000.00	4.95	\$ 1,250.00		05/04/20	10/01/24	Aa2/AA-
13063CQC7	CA St Tax Exempt Var Purp GO Bonds	\$ 205,000.00	\$ 205,305.45	4.95	\$ 2,562.50		05/08/20	11/01/24	Aa2/AA-
<b>Total CA State Obligations</b>		<b>\$ 970,000.00</b>	<b>\$ 970,305.45</b>	<b>3.71</b>	<b>\$ 12,125.00</b>	<b>1.23%</b>			

**Medium-term Notes (sorted by maturity date)**

CUSIP	Issuer	Purchase Price	Market Value	% Yield	Estimated Qtrly Earnings	% of Portfolio	Purchase Date	Maturity Date	Moody/S&P
46632FRU1	JP Morgan Chase Bank	\$ 1,500,000.00	\$ 1,409,295.00	0.77	\$ 2,625.00		01/22/21	01/22/26	Aa2/A+
06048WL65	Bank of America Corp.	\$ 300,000.00	\$ 284,241.00	1.15	\$ 787.50		03/10/21	03/10/26	A2/A-
38150AFK6	Goldman Sachs Group Inc.	\$ 500,000.00	\$ 473,840.00	1.69	\$ 1,937.50		04/30/21	04/30/26	A2/BBB+
<b>Total Medium-term Notes</b>		<b>\$ 2,300,000.00</b>	<b>\$ 2,167,376.00</b>	<b>1.20</b>	<b>\$ 5,350.00</b>	<b>2.92%</b>			
<b>Total Investment Portfolio</b>		<b>\$ 78,827,547.68</b>	<b>\$ 78,560,210.72</b>	<b>2.91</b>	<b>\$ 347,612.17</b>	<b>100.00%</b>			

This quarterly report accurately reflects all City of Brawley's pooled investments. It is in conformity with the City's Investment Policy. The City has sufficient cash flow to meet six months of expenditures. LAIF and Multi-Bank Securities, Inc. statements are the source of market values.

  
 \_\_\_\_\_  
 Silvia Luna, Finance Director

01/31/2025  
 \_\_\_\_\_  
 Date



# 4d

**Office of the Mayor**

## **BRAWLEY, CALIFORNIA**

**February 18, 2025**

**USDA Rural Development  
RBDG Program**

**RE: Letter of Support**

Dear USDA Rural Development Office,

On behalf of the City of Brawley, I am pleased to offer my full support to Imperial Regional Alliance (IRA) for the Imperial Valley Business Resource Center (IVBRC). The IVBRC plays a crucial role in promoting and supporting business development and employment opportunities within our region while fostering collaboration among key economic development organizations, including the City of Brawley. The collective effort led by the IVBRC serves as a central hub to spotlight local resources and maximize the use of regional programs and opportunities.

“As part of our broader vision to foster sustainable economic growth, the City of Brawley remains committed to supporting new and existing businesses, enhancing workforce development programs, and improving the overall quality of life for our residents. Through strategic partnerships and robust local initiatives, we strive to cultivate an environment of innovation and inclusive prosperity, values that align perfectly with the IVBRC’s mission.”

As we move forward, Brawley stands firmly behind the efforts of Imperial Regional Alliance and the IVBRC in their promising mission to enhance collaboration, outreach, and awareness between economic development organizations and our local communities. Most importantly, the IVBRC has been instrumental in tackling unemployment and poverty in our region by working together with key partners to expand and diversify employment opportunities, promote financial and investment resources, and offer valuable workforce and skills training programs.

We are eager to continue our partnership with Imperial Regional Alliance in support of the IVBRC and look forward to the positive impact this collaboration will have on the economic growth and prosperity of our region.

Very Respectfully,

---

**Gil Rebollar, Mayor of Brawley**

**ADMINISTRATIVE OFFICES**  
383 Main Street  
Brawley, CA 92227  
Phone: (760) 351-3048  
FAX: (760) 351-3088

# City of Brawley

City Council  
February 18, 2025  
Agenda Item No 6a



## STAFF REPORT

**To:** City Council  
**From:** Jimmy Duran, Interim City Manager  
**Prepared by:** John Tang, Interim Assistant to the City Manager  
**Subject:** **Personnel Policy 153-60 and Personnel Policy 153-61**

### RECOMMENDATION:

Approve by resolution to adopt Personnel Policy 153-60 and Personnel Policy 153-61

### BACKGROUND INFORMATION:

The City of Brawley values employees who have additional skills and qualifications that enhance service delivery and operational effectiveness. To acknowledge and reward these contributions, the following policies outline the criteria and procedures for educational and bilingual incentives for full-time, unrepresented employees.

Educational and bilingual incentives contribute to a more skilled workforce, enhancing productivity. Employees who pursue further education are equipped with advanced skills and knowledge, enabling them to perform their tasks more efficiently. This results in higher output and improved quality of work, benefiting both employers and the economy.

Additionally, offering educational and bilingual incentives can greatly attract top talent. Job seekers are increasingly looking for employers that provide opportunities for continuous learning, career advancement, and a diverse work environment. By implementing these incentives, our city can distinguish itself in the competitive job market, attract highly skilled candidates, and improve retention rates.

Investing in bilingual and educational incentives for city employees is a strategic measure that benefits the employees and the entire community. Some positive outcomes are enhanced communication, improved service delivery, professional development, and stronger community relations. Municipalities can ensure a brighter and more prosperous future for all residents by fostering continuous learning and inclusivity.

### FISCAL IMPACT:

Based on a recent employee census and analysis, it is estimated that 32 unrepresented employees may be eligible for Bilingual pay, while 12 unrepresented employees qualify for Education pay.

According to the FY24-25 salary schedules, the fiscal impact of implementing the Education and Bilingual incentive pay for the remainder of FY24-25 (February through June) is estimated at approximately \$38,000.

The Incentive pay will be offered to any City unrepresented employee under the General Fund and/or Enterprise Fund. The estimated fiscal impact of \$38,000 will be covered through the unrestricted reserves of each respective fund.



**ALTERNATIVES:**

Council may choose not to adopt.

**ATTACHMENTS:**

1. Personnel Policy 153-61
2. Personnel Policy 153-60
3. Proposed Resolution

**REPORT COORDINATED WITH (other than person preparing the staff report):**

Staff, Title or Consultant, Agency

, , ,

**REPORT APPROVAL(S):**

Staff, Title or Consultant, Agency

Silvia Luna, Finance Director

Jimmy Duran, City Manager

Status – Date of Status

Approved - 2/12/2025

Approved - 2/12/2025



# 6a.1

## City of Brawley

### Personnel Policy

Subject City of Brawley Bilingual Incentives Policy

Policy Number 153-61

The City of Brawley recognizes the value of employees with additional skills and qualifications that enhance service delivery and operational effectiveness. To support and reward these contributions, this policy outlines the criteria and procedures for bilingual incentives for full-time unrepresented employees.

This policy applies to all full-time unrepresented employees of the City of Brawley. Contract employees are not eligible for these incentives.

#### **Bilingual Incentive**

##### Eligibility Criteria:

1. Employees must demonstrate proficiency in Spanish and use their bilingual skills to assist the public or employees in their official duties.
2. Eligibility will be determined through an oral assessment exam to verify language proficiency.

##### Incentive Amount:

- Qualified employees will receive a 2.5% increase in their base pay.

##### Assessment Process:

1. Employees who believe they qualify must submit a written request to their supervisor or Human Resources.
2. A formal assessment will determine proficiency in speaking Spanish as needed for the role.
3. Human Resources will notify the employee of the results within ten (10) business days of the assessment.

# 6a.1

## General Provisions

1. Employees may qualify for the incentive if they meet the requirement.
2. Contract employees are not eligible for this incentive.
3. Incentives will be reviewed periodically to ensure compliance with policy requirements.

Human Resources will maintain all incentive eligibility and approvals records.

**Effective Date:**

This policy is effective upon council approval and will remain in effect until amended or revoked.



# 6a.2

## City of Brawley

### Personnel Policy

Subject City of Brawley Educational Incentives Policy

Policy Number 153-60

The City of Brawley recognizes the value of employees with additional skills and qualifications that enhance service delivery and operational effectiveness. To support and reward these contributions, this policy outlines the criteria and procedures for educational incentives for full-time unrepresented employees.

This policy applies to all full-time unrepresented employees of the City of Brawley. Contract employees are not eligible for these incentives.

#### **Educational Incentive**

##### Eligibility Criteria:

1. Employees must possess an educational degree that exceeds the minimum qualifications stated in their job description.
2. The degree must be relevant to the employee's current position.
3. Certifications required for the position or that do not exceed job qualifications do not qualify for the incentive.

##### Incentive Amount:

- Qualified employees will receive a 2.5% increase in their base pay.

##### Verification Process:

1. Employees must provide official transcripts or documentation of their educational attainment to Human Resources.
2. Human Resources will review the submission and confirm whether the education exceeds the employee's current position requirements and is relevant to the position.



# 6a.2

3. Approved incentives will be applied to the employee's base pay within the next full pay cycle.

## General Provisions

1. Employees may qualify for the incentive if they meet the requirement.
2. Contract employees are not eligible for this incentive.
3. Incentives will be reviewed periodically to ensure compliance with policy requirements.

Human Resources will maintain all incentive eligibility and approvals records.

### **Effective Date:**

This policy is effective upon council approval and will remain in effect until amended or revoked.

6a.3

RESOLUTION NO. 2025 –

A RESOLUTION OF THE CITY COUNCIL OF THE CITY OF BRAWLEY,  
CALIFORNIA ADOPTING TWO EMPLOYMENT POLICIES

WHEREAS, the City’s Council believes that it is in the best interest of the City to offer benefits to its employees designed to retain and recruit quality employees; and

WHEREAS, the attached policies will provide low cost benefits to the City’s employees designed to improve employee retention and recruitment.; and

NOW THEREFORE BE IT RESOLVED AS FOLLOWS:

1. That Personnel Policy Number 153-60 – City of Brawley Educational Incentives Policy is hereby adopted; and

2. That Personnel Policy Number 153-61 – City of Brawley Bilingual Incentive Policy is hereby adopted; and

PASSED, APPROVED AND ADOPTED at a regular meeting of the Brawley City Council held on February 18, 2025.

CITY OF BRAWLEY, CALIFORNIA

\_\_\_\_\_  
Gil Rebollar, Mayor

ATTEST:

\_\_\_\_\_  
Ana Gutierrez, City Clerk

I, ANA GUTIERREZ, City Clerk of the City of Brawley, California, DO HEREBY CERTIFY that the foregoing Resolution No. 2025- was passed and adopted by the City Council of the City of Brawley, California, at a regular meeting held on the 18th day of February, 2025, and that it was so adopted by the vote:

AYES:

NAYES:

ABSTAIN:

ABSENT:

DATED: \_\_\_\_\_

\_\_\_\_\_  
Ana Gutierrez, Deputy City Clerk

# City of Brawley

City Council  
February 18, 2025  
Agenda Item No 6b



## STAFF REPORT

**To:** City Council  
**From:** Cynthia Mancha, Consultant City Planner  
**Prepared by:** Cynthia Mancha, Consultant City Planner  
**Subject:** **Approve the Zone Change Ordinance (ZC) 24-02 and Ordinance 1st Reading**

### RECOMMENDATION:

Approve the Zone Change Ordinance and 1st Reading for ZC 24-02

### BACKGROUND INFORMATION:

On November 13, 2024, the Planning Commission recommended for approval ZC (ZC) 24-02 to convert two .13 acre lots from C-1 (Neighborhood Commercial) to R-1 (Single Family Residential). The properties are located within City limits with the situs address identified as 388 and 400 Palm Avenue. The rezone will allow the construction of two single family residential dwelling units in each respective parcel. The Planning Commission reviewed the findings of the petition for Zone Change (ZC) 24-02 and determined the zone change is consistent with the City's General Plan, Zoning Ordinance, and existing land uses within the project vicinity, and that approving the project would not be detrimental to the environment. The Planning Commission conditionally approved ZC # 24-02 and project Negative Declaration on November 13, 2024.

### FISCAL IMPACT:

None. The applicant will be responsible for all filing fees, development impact fees, and any required off-site improvements associated with the project.

### ALTERNATIVES:

None at this time.

### ATTACHMENTS:

1. Staff Report
2. Initial Study
3. Zone Change Map
4. Ordinance

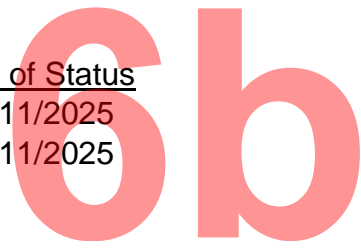
### REPORT COORDINATED WITH (other than person preparing the staff report):

Staff, Title or Consultant, Agency

### REPORT APPROVAL(S):

Staff, Title or Consultant, Agency  
Silvia Luna, Finance Director  
Jimmy Duran, City Manager

Status – Date of Status  
Approved - 2/11/2025  
Approved - 2/11/2025



**PLANNING COMMISSION STAFF REPORT**

**Zone Change #:** ZC 24-02 – C-1 (Neighborhood Commercial) to R-1 (Single-Family Residential) & General Plan Amendment # 24-01

**Variance #** VAR 24-01 for 388 Palm Avenue (APN: 047-301-012)

**Property Owners:** Shine Investments, LLC

**Applicant/  
Representative:** Ray Roben

**Legal Description:** LOT 8 ULLOA SUB FM 1 28 and LOT 7 ULLOA SUB FM 1 28  
**APN's:** 047-301-012 and 047-301-019

**Location:** 388 and 400 Palm Avenue

**Area:** .13 acre (5,898.50 sqft) and .13 acre (5,913.28 sqft)

**Zoning:** C-1 (Neighborhood Commercial)

**Existing Use:** Commercial Building and undeveloped parcel within City Limits

**Proposed Use:** Single Family Dwellings

**Proposed Rezoning:** R-1 (Single-Family Residential)

**Surrounding Land Uses:**

- North -** R-1 (Single-Family Residential)/Single-Family dwelling units.
- South -** R-1 (Single-Family Residential)/Single-Family dwelling units.
- East -** R-1 (Single-Family Residential)/Single-Family dwelling units/elementary.
- West-** R-1 (Single-Family Residential)/Single-Family dwelling units

**General Plan Designation:** C – Commercial

# 6b.1

## **General Information:**

Zone Change #24-02; General Plan Amendment #24-01; Variance #24-01 proposes to rezone two properties from C-1 (Neighborhood Commercial) to R-1 (Single-Family Residential). The zone change is consistent with the existing land uses within the project vicinity. The property identified as 388 N. Palm Avenue has an existing non-conforming structure. The applicant has requested a Variance to accommodate the use as a single-family dwelling. Per Article XVI of the City Zoning Ordinance, the Planning Commission must review the findings of the petition for zone change for consistency with the adopted regulations and make recommendations to City Council for approval, conditional approval, or disapproval of Zone Change #24-02; General Plan Amendment #24-01; Variance #24-01; and Negative Declaration.

## **Analysis:**

**400 Palm Avenue** is also known as (APN: 047-301-019), a vacant, undeveloped parcel, formerly used as an unpaved parking lot for the market (commercial use) located at 388 Palm Ave. The lot satisfies the residential zoning lot width and depth requirements. The proposed zone change from C-1 (Neighborhood Commercial) to R-1 (Single Family) is consistent with the existing land uses within the project vicinity. The change in zone will reduce the vehicle miles traveled and is a less intensive land use than the C-1 zone and will not have a detrimental effect on the environment. The proposed dwelling unit will need to abide Brawley Municipal Code – Zoning Ordinance Development Standards.

**388 Palm Avenue** is also known as (APN: 047-301-012), a .13 developed parcel, with an existing 1,920 sqft structure. The proposed zone change from C-1 (Neighborhood Commercial) to R-1 (Single Family) is consistent with the existing land uses within the project vicinity. The change in zone will reduce the vehicle miles traveled and is a less intensive land use than the C-1 zone and will not have a detrimental effect on the environment.

The existing structure at 388 Palm Avenue was used as a market (commercial use) and most recently as a church. The existing conditions include a 0-foot front and interior (south lot line) setback. The parcel was developed prior to the adoption of the 2008 zoning ordinance. The zoning ordinance allows for the continuation of legal non-conforming uses; however, the structure has not been in use for more than 12 months and does not satisfy the requirements for the allowed continuance of non-conforming use per Sec. 27.235 (b) of the City Municipal Code.

# 6b.1

## Brawley Municipal Code – Zoning Ordinance

Development Standard	C-1 (Neighborhood Commercial)	Current Condition	R-1 (Single Family Residential)	Current Condition
Front Setback (Ultimate Street ROW)	15'	Non-Conforming	20'	Non-Conforming
Interior Setback (South Lot Line)	5' – adjacent to residential zone	Non-Conforming	5'	Non-Conforming

Front setbacks in residential zones are intended to preserve the aesthetics in the neighborhood, to provide adequate space for landscaping, and for the installation of utilities.

Side setback requirements are implemented to mitigate and preserve health and safety; including but not limited to, reducing the incidence of fires spreading to neighboring structures and reducing or limiting smoke damage to neighboring structures. California Building Code utilizes the interior building separation standard of 5' and the California Fire Code allows a 3' building separation contingent on satisfactorily installing fire suppression materials and systems as required in the fire code.

Permitting a Variance is determined based on the following considerations:

- 1. Are there special circumstances applicable to the property, including size, shape, topography, location or surroundings:**

No, the parcel can be developed to satisfy the current development standards adopted.

- 2. Is the strict application of the zoning ordinance depriving such property of privileges enjoyed by other property in the vicinity and under identical zoning classification:**

No, the parcel can be developed to meet the current adopted development

# 6b.1

standards.

- 3. The variance granted shall not constitute a grant of special privileges inconsistent with the limitations upon other properties in the vicinity and zone in which the property is situated.**

Yes, allowing the Variance will grant a privilege that is inconsistent with the zone.

- 4. The variance granted does not authorize a use or activity which is not otherwise expressly authorized by the zoning regulations applicable to the property:**

Yes, the Variance would authorize an activity which is otherwise not permitted for the zone.

- 5. That the proposed variance will not be materially detrimental to the public welfare or detrimental to the health and safety of persons located in the vicinity of the subject property:**

If a variance is granted, it does not guarantee the issuance of a building permit. The City Fire Marshall shall review, approve, and find the Fire Suppression Plans acceptable and make the determination that the setback requirements will not constitute a health or safety hazard.

- 6. The proposed variance is consistent with the character of the area in which the variance is granted in that previous variances have been granted, lot sizes are large, landscaping is mature, and architecture is varied.**

Granting the Variance would create an inconsistency with the development standards for the zone and for the adjacent land use.

It is Staff's assessment that the zone change is in conformance with the General Plan Land Use Element and furthers the following goals:

**LUE Policy 1.1.7:** Encourage in-fill of vacant parcels in areas already predominately developed.

**LUE Policy 1.1.12:** Ensure that the distribution and intensity of land uses are consistent with the Land Use Plan and classification system contained in the Land Use Element.



Development at an intensity or density between the effective and maximum levels can occur only where projects offer exceptional design quality or important public amenities or benefits above the standards required by the City's Zoning Ordinance and other regulatory documents.

**LUE Objective 2.1:** Ensure that new development is compatible with surrounding land uses in the community and in adjacent unincorporated areas, the City's circulation network, availability of public facilities, existing development constraints and the City's unique characteristics and resources.

It is Staff's assessment that the variance request is not in conformance with the General Plan Land Use Element and does not comply with the following goals:

**LUE Policy 1.2.2:** Maintain consistency between the Land Use Element, Zoning Ordinances, and other City Ordinances, regulations and standards.

**LUE Objective 2.2:** Assure a safe, healthy and aesthetically pleasing community for residents and businesses.

**LUE Policy 2.2.4:** Encourage the elimination of non-conforming land uses and nonconforming buildings.

# 6b.1

## **Conditions of Approval:**

If approved by the Planning Commission, the Planning Department recommends the following conditions:

1. The conditional approval of the ZC # 24-02 shall not constitute the waiver of any requirement of the City's ordinances or regulations, except where a condition set forth herein specifically provides for a waiver.
2. The provisions of the Zone Change are to run with the land and shall bind the current and future owner(s), successor(s) in interest, assignee(s) and/or transferor(s) of said parcel.
3. Developer/Applicant/Property Owner shall comply with all local, state and/or federal laws, rules, regulations and/or standards as they may pertain to this project, whether specified herein or not.
4. The Applicant/Developer/Owner shall obtain a Building Permit for all building construction and on-site improvements including permanent and temporary signs, and landscaping when applicable. Inspections for compliance shall be obtained prior to issuance of a Certificate of Occupancy.
5. Landscaping will be required as per Sec. 27.180 of the Zoning Ordinance.
6. Developer/Applicant/Property Owner shall abide by Sec. 15A.11 of the Zoning Ordinance or State Law, whichever is more restrictive.
7. Hydraulic, drainage and grading details to City standards provided to the Public Works Director and City Engineer. If retention is determined necessary, the percentage of retention shall be determined by the Public Works Director and City Engineer per current discharge amount and the amount of pervious surface that will be eliminated.
8. Developer/Applicant/Property Owner shall install driveways for each parcel to the satisfaction and approval of the City Engineer and Public Works Director in compliance with the City Standard.
9. Developer/Applicant/Property Owner shall obtain an encroachment permit from the Department of Public Works for any new, altered or unpermitted driveways necessary to access each of the parcels from a public street.
10. Developer/Applicant/Property Owner shall provide an equipment list and Haul Route prior to the commencement of site grading activities. The transportation of equipment in excess of the allowed length, width and weight permitted by the California Vehicle Code on City right-of-way shall require approval from the Public Works Director and City Engineer.
11. Developer/Applicant/Property Owner shall notify the Public Works Department 72 hours prior to the commencement of site grading activities. An inspection of the City right-of-

- way abutting the project shall be documented. Any damage to City right-of-way resulting from any construction activities shall be improved or restored to the approval and satisfaction of the Public Works Director and City Engineer at the sole expense of the Developer/Applicant/Property Owner prior to the issuance of a Certificate of Occupancy.
12. Provide sewer and water, curb and gutter, sidewalk, driveway, street and other public improvements to City Standard and approval of the Public Works Director and City Engineer before the issuance of a Certificate of Occupancy for any structure for each parcel.
  13. Developer/Applicant/Property Owner shall install fire hydrants per California Fire Code and approval by the City Fire Department prior to the issuance of a Certificate of Occupancy.
  14. Developer/Applicant/Property Owner shall provide a Fire Suppression Plans satisfying the California Fire Code for properties with zero set-setback. If the applicant is unable to satisfy the Fire Code requirements, the variance will be null and void.
  15. Parking shall be in accordance with Sec. 27.143 of the Zoning Ordinance.
  16. Fences, walls, and hedges shall be installed per Sec. 27.179 of the Zoning Ordinance.
  17. Lighting shall be installed per Sec. 27.182 of the Zoning Ordinance.
  18. Developer/Applicant/Property Owner shall defend, indemnify, and hold harmless the City of Brawley, or its agents, officers and employees from any claim, action or proceedings against the City or its agents, officers, or employees to attack, set aside, void or annul, an approval by the Development Review Committee, Planning Commission or City Council concerning the project. The City of Brawley shall promptly notify the applicant of any claim, action or proceedings and shall cooperate fully in the defense.
  19. Developer/Applicant/Property Owner shall provide water and sewer calculations, prepared by a CA registered engineer, to confirm overall capacity in the receiving system. Should improvements be required, the applicant shall prepare a public improvement plan for the necessary upgrades/repairs, to the satisfaction of the Public Works Director and City Engineer. Should future improvements be necessary, the applicant shall be responsible for the payment of any and all Fair Share costs toward water and sewer improvements prior to the issuance of grading permits.
  20. Developer/Applicant/Property Owner shall submit water technical documentation as required by the Regional Quality Control Board. Technical documentation shall be approved by the Public Works Director and City Engineer prior to the issuance of a Building Permit.
  21. Developer/Applicant/Property Owner shall pay any and all amounts as determined by the city to defray all costs for the review of reports, field investigations, or other activities related to compliance with this permit/approval, city ordinance and/or any other laws that apply. This includes any applicable Development Impact Fees, Capacity Fees, Plan Check and/or Inspection Fees, Air Pollution Control District (APCD) Fees, Environmental Filing Fees and Building Permit Fees.
  22. Developer/Applicant/Property Owner shall comply with all local, state and/or federal laws, rules, regulations and/or standards as they may pertain to this project, whether specified herein or not.
  23. Any person or party who succeeds in the interest of the present owner by sale, assignment, transfer, conveyance, exchange or other means shall be bound by the conditions of approval.

# 6b.1

The recommendation is based on the following findings:

1. The proposal is subject to tiering pursuant to Sections 15152 and 15385 in accordance with the California Environmental Quality Act (CEQA).
2. The location of the project and surrounding land uses make it unlikely the project will cause significant environmental impact as mentioned in the 2008 General Plan Environmental Impact Report (EIR).
3. The Variance shall satisfy Fire and Building Code requirements and shall be null and void if Fire and Building Code requirements can't be satisfied.
4. Approval of the zone change will not be detrimental to the public welfare or detrimental to the health and safety of the residents of the City of Brawley.

The Brawley General Land Use Map designates this property for – Commercial Use. A rezone to LR Low Density Residential (R-1- Single Family Residential) will permit the development of single-family dwellings by right.

**ATTACHMENTS:** Location Map, Site Plan

6b.1

# 6b.1

## Vicinity Map/Project Location

APN's:

047-301-012 and 047-301-019



# 6b.2

**DRAFT**

**Initial Study & Environmental Analysis  
for  
Zone Change # 24-02 – 388 and 400 Palm**



**City of Brawley**

383 Main Street  
Brawley, CA 92227  
760-344-2222

**September 2024**



**City of Brawley  
Initial Study/Environmental Checklist**

---

**September 2024**

6b.2

1. **Project Title:** Zone Change – 388 and 400 Palm Avenue

2. **Lead agency name and address:**  
**City of Brawley**  
383 Main Street  
Brawley, CA 92227

Contact: Cynthia Mancha, Consultant City Planner  
(760) 344-8822  
[planning@brawley-ca.gov](mailto:planning@brawley-ca.gov)

4. **Property Owner:** Shine Investments, LLC

5. **Project Representative:** Ray Roben

6. **Legal Description:** LOT 8 ULLOA SUB FM 1 28 and LOT 7 ULLOA SUB FM 1 28  
**APN's:** 047-301-012 and 047-301-019

7. **Project Location** 388 and 400 Palm Avenue

8. **Project Description:** Zone Change #24-02; General Plan Amendment #24-01; Variance #24-01 proposes to rezone two properties from C-1 (Neighborhood Commercial) to R-1 (Single-Family Residential). The rezone is consistent with the existing land uses within the project vicinity. The property identified as 388 N. Palm Avenue has an existing non-conforming structure. The applicant has requested a Variance to accommodate the use as a single-family dwelling unit. Per Article XVI of the City Zoning Ordinance, the Planning Commission must review the findings of the petition for zone change for consistency with the adopted regulations and make recommendations to City Council for approval, conditional approval, or disapproval of Zone Change #24-02; General Plan Amendment #24-01; Variance #24-01; and Negative Declaration.

9. **General Plan Designation:**  
**Existing City General Plan:** C - Commercial  
**Proposed City General Plan:** LR (Low Density Residential)

10. **Zoning:**  
**Proposed Annexed Territory:** N/A  
**Existing City Zoning:** C-1 (NeCommercial)  
**Proposed City Zoning:** R-1 (Single Family Residential)

10. **Surrounding Land**



**North** - R-1 (Single-Family Residential)/Single-Family dwelling units.

**South** - R-1 (Single-Family Residential)/Single-Family dwelling units.

**East** - R-1 (Single-Family Residential)/Single-Family dwelling units/elementary.

**West**- R-1 (Single-Family Residential)/Single-Family dwelling units

**11. Other Agencies whose approval is required: (e.g., permits, financing approval, or participation agreement)**

- a) Building
- b) Fire
- c) Public Works

**11. Have California Native American tribes traditionally and culturally affiliated with the project area requested consultation pursuant to Public Resources Code section 21080.3.1?**

Infill Development tiered from City General Plan Adopted in 2008.

## Vicinity Map/Project Location

APN's:

047-301-012 and 047-301-019



6b-2

**ENVIRONMENTAL FACTORS POTENTIALLY AFFECTED:**

The environmental factors checked below would be potentially affected by this project, involving at least one impact that is a "Potentially Significant Impact," as indicated by the checklist on the following pages.

<input type="checkbox"/>	Aesthetics	<input type="checkbox"/>	Agriculture/Forestry Resources	<input type="checkbox"/>	Air Quality
<input type="checkbox"/>	Biological Resources	<input type="checkbox"/>	Cultural Resources	<input type="checkbox"/>	Geology/Soils
<input type="checkbox"/>	Greenhouse Gas Emissions	<input type="checkbox"/>	Hazards and Hazardous Materials	<input type="checkbox"/>	Hydrology/Water Quality
<input type="checkbox"/>	Land Use/Planning	<input type="checkbox"/>	Mineral Resources	<input type="checkbox"/>	Noise
<input type="checkbox"/>	Population/Housing	<input type="checkbox"/>	Public Services	<input type="checkbox"/>	Recreation
<input type="checkbox"/>	Transportation	<input type="checkbox"/>	Utilities/Service Systems	<input type="checkbox"/>	Mandatory Findings of Significance

**ENVIRONMENTAL REVIEW COMMITTEE DETERMINATION**

The proposed project could not have a significant effect on the environment, and a <b>NEGATIVE DECLARATION</b> will be prepared.	
The proposed project could have a significant effect on the environment; however, there will not be a significant effect in this case because <b>the mitigation measures</b> described on an attached sheet have been added to the project. <b>A MITIGATED NEGATIVE DECLARATION</b> will be prepared.	
The proposed project MAY have a significant effect(s) on the environment and an <b>ENVIRONMENTAL IMPACT REPORT</b> is required.	
The proposed project MAY have a significant effect(s) on the environment, but at least one effect (1) has been adequately analyzed in an earlier document pursuant to applicable legal standards, and (2) has been addressed by mitigation measures based on the earlier analysis as described on attached sheets, if the effect is a "Potentially Significant Impact" or "Potentially Significant Unless Mitigated." A <b>FOCUSED ENVIRONMENTAL IMPACT REPORT</b> is required, but it must analyze only the effects that remain to be addressed.	
Although the proposed project could have a significant effect on the environment, there <b>WILL NOT</b> be a significant effect in this case because all potentially significant effects (1) have been analyzed in an earlier EIR pursuant to applicable standards and (2) have been avoided or mitigated pursuant to that earlier EIR, including revisions or mitigation measures that are imposed upon the proposed project. <b>No further action is required.</b>	

CA Department of Fish and Game  
**No Impact Finding**    Requested

Yes	No	Absent	Members of the EEC
			Public Works
			Police
			Fire
			Planning
			Administration

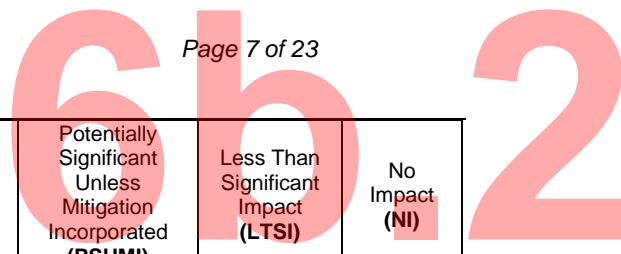
Cynthia Mancha, Consultant City Planner  
 Date

---

**EVALUATION OF ENVIRONMENTAL IMPACTS:**

- 1) A brief explanation is required for all answers except “No Impact” answers that are adequately supported by the information sources a lead agency cites in the parentheses following each question. A “No Impact” answer is adequately supported if the referenced information sources show that the impact simply does not apply to projects like the one involved (e.g. the project falls outside a fault rupture zone). A “No Impact” answer should be explained where it is based on project-specific factors as well as general standards (e.g. the project will not expose sensitive receptors to pollutants, based on a project-specific screening analysis).
- 2) All answers must take account of the whole action involved, including off-site as well as on-site, cumulative as well as project-level, indirect as well as direct, and construction as well as operational impacts.
- 3) Once the lead agency has determined that a particular physical impact may occur then the checklist answers must indicate whether the impact is potentially significant, less than significant with mitigation, or less than significant. “Potentially Significant Impact” is appropriate if there is substantial evidence that an effect is significant. If there are one or more “Potentially Significant Impact” entries when the determination is made, an EIR is required.
- 4) “Negative Declaration: Less Than Significant With Mitigation Incorporated” applies where the incorporation of mitigation measures has reduced an effect from “Potentially Significant Impact” to a “Less than Significant Impact.” The lead agency must describe the mitigation measures, and briefly explain how they reduce the effect to a less than significant level (mitigation measures from Section 17, “Earlier Analysis,” may be cross-referenced).
- 5) Earlier analysis may be used where, pursuant to the tiering, program EIR, or other CEQA process, an effect has been adequately analyzed in an earlier EIR or negative declaration. Section 15063(c)(3)(D). In this case, a brief discussion should identify the following:
  - a. Earlier Analysis Used. Identify and state where they are available for review.
  - b. Impacts Adequately Addressed. Identify which effects from the above checklist were within the scope of and adequately analyzed in an earlier document pursuant to applicable legal standards, and state whether such effects were addressed by mitigation measures based on the earlier analysis.
  - c. Mitigation Measures. For effects that are “Less than Significant with Mitigation Measures Incorporated,” describe the mitigation measures, which were incorporated or refined from the earlier document and the extent to which they address site-specific conditions for the project.

Authority: *Public Resources Code Sections 21083 and 21087. Reference: Public Resources Code Sections 21080(c), 21080.1, 21080.3, 21082.1, 21083, 21083.3, 21093, 21094, 21151; Sundstrom v. County of Mendocino, 202 Cal. App. 3d 296 (1988); Leonoff v. Monterey Board of Supervisors, 222 Cal. App. 3d 1337 (1990).*
- 6) Lead agencies are encouraged to incorporate into the checklist references to information sources for potential impacts (e.g. general plans, zoning ordinances). Reference to a previously prepared or outside document should, where appropriate, include a reference to the page or pages where the statement is substantiated.



<b>I. AESTHETICS</b> <i>Would the project:</i>	Potentially Significant Impact (PSI)	Potentially Significant Unless Mitigation Incorporated (PSUMI)	Less Than Significant Impact (LTSI)	No Impact (NI)
a) Have a substantial adverse effect on a scenic vista?	<input type="checkbox"/>	<input type="checkbox"/>	<input type="checkbox"/>	<input checked="" type="checkbox"/>
b) Substantially damage scenic resources, including, but not limited to, trees, rock outcroppings, and historic buildings within a state scenic highway?	<input type="checkbox"/>	<input type="checkbox"/>	<input type="checkbox"/>	<input checked="" type="checkbox"/>
c) Substantially degrade the existing visual character or quality of public views of the site and its surroundings?	<input type="checkbox"/>	<input type="checkbox"/>	<input type="checkbox"/>	<input checked="" type="checkbox"/>
d) Create a new source of substantial light or glare which would adversely affect day or nighttime views in the area?	<input type="checkbox"/>	<input type="checkbox"/>	<input type="checkbox"/>	<input checked="" type="checkbox"/>

**I. AESTHETICS IMPACT DISCUSSION**

The proposed zone change and installation of single family dwellings will be consistent with the land uses in the vicinity. Additionally, the structure at 388 Palm Avenue, if rehabilitated to meet California Fire Code will eliminate a blighted building.

<b>II. AGRICULTURE AND FORESTRY RESOURCES.</b> <i>Would the project:</i>	Potentially Significant Impact (PSI)	Potentially Significant Unless Mitigation Incorporated (PSUMI)	Less Than Significant Impact (LTSI)	No Impact (NI)
a) Convert Prime Farmland, Unique Farmland, or Farmland of Statewide Importance (Farmland), as shown on the maps prepared pursuant to the Farmland Mapping and Monitoring Program of the California Resources Agency, to non-agricultural use?	<input type="checkbox"/>	<input type="checkbox"/>	<input type="checkbox"/>	<input checked="" type="checkbox"/>
b) Conflict with existing zoning for agricultural use, or a Williamson Act Contract?	<input type="checkbox"/>	<input type="checkbox"/>	<input type="checkbox"/>	<input checked="" type="checkbox"/>
c) Conflict with existing zoning for, or cause rezoning of, forest land (as defined in Public Resources Code section 12220(g)), timberland (as defined by Public Resources Code section 4526), or timberland zoned Timberland Production (as defined by Government Code Section 51104(g))?	<input type="checkbox"/>	<input type="checkbox"/>	<input type="checkbox"/>	<input checked="" type="checkbox"/>
d) Result in the loss of forest land or conversion of forest land to non-forest use?	<input type="checkbox"/>	<input type="checkbox"/>	<input type="checkbox"/>	<input checked="" type="checkbox"/>
e) Involve other changes in the existing environment which, due to their location or nature, could result	<input type="checkbox"/>	<input type="checkbox"/>	<input type="checkbox"/>	<input checked="" type="checkbox"/>

6b.2

in conversion of Farmland, to non-agricultural use or conversion of forest land to non-forest use?				
--	--	--	--	--

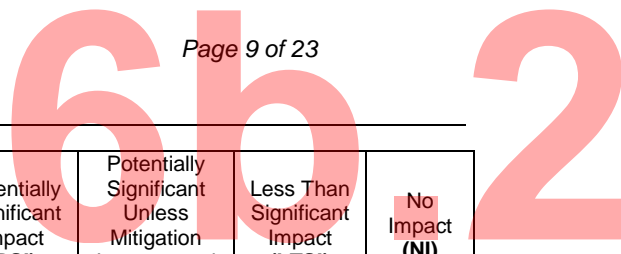
**II. Agriculture and Forestry Resources Discussion**

The parcels are located within City limits and zoned for commercial use.

<b>III. AIR QUALITY.</b> <i>Where available, the significance criteria established by the applicable air quality management or air pollution control district may be relied upon to make the following determinations. Would the Project:</i>	Potentially Significant Impact (PSI)	Potentially Significant Unless Mitigation Incorporated (PSUMI)	Less Than Significant Impact (LTSI)	No Impact (NI)
a) Conflict with or obstruct implementation of the applicable air quality plan?	<input type="checkbox"/>	<input type="checkbox"/>	<input type="checkbox"/>	<input checked="" type="checkbox"/>
b) Violate any air quality standard or contribute substantially to an existing or projected air quality violation?	<input type="checkbox"/>	<input type="checkbox"/>	<input type="checkbox"/>	<input checked="" type="checkbox"/>
c) Result in a cumulatively considerable net increase of any criteria pollutant for which the project region is non-attainment under an applicable federal or state ambient air quality standard (including releasing emissions which exceed quantitative thresholds for ozone precursors)?	<input type="checkbox"/>	<input type="checkbox"/>	<input checked="" type="checkbox"/>	<input type="checkbox"/>
d) Expose sensitive receptors to substantial pollutant concentrations?	<input type="checkbox"/>	<input type="checkbox"/>	<input checked="" type="checkbox"/>	<input type="checkbox"/>
e) Create objectionable odors affecting a substantial number of people?	<input type="checkbox"/>	<input type="checkbox"/>	<input checked="" type="checkbox"/>	<input type="checkbox"/>

**III. AIR QUALITY DISCUSSION**

During the construction phase, the project may generate increased vehicle trips, fugitive dust during grading and ground disturbing activities. The Applicant will need to submit applicable permits and mitigation fees to the Imperial County Air Pollution Control District, as well as implement Best Management Practices to mitigate dust.



<b>IV. BIOLOGICAL RESOURCES.</b> <i>Would the Project:</i>	Potentially Significant Impact (PSI)	Potentially Significant Unless Mitigation Incorporated (PSUMI)	Less Than Significant Impact (LTSI)	No Impact (NI)
a) Have a substantial adverse effect, either directly or through habitat modifications, on any species identified as a candidate, sensitive, or special status species in local or regional plans, policies or regulations, or by the California Department of Fish and Game or U.S. Fish and Wildlife Service?	<input type="checkbox"/>	<input type="checkbox"/>	<input checked="" type="checkbox"/>	<input type="checkbox"/>
b) Have a substantial adverse effect on any riparian habitat or other sensitive natural community identified in local or regional plans, policies, regulations, or by the California Department of Fish and Game or U.S. Fish and Wildlife Service?	<input type="checkbox"/>	<input type="checkbox"/>	<input checked="" type="checkbox"/>	<input type="checkbox"/>
c) Have a substantial adverse effect on federally protected wetlands as defined by Section 404 of the Clean Water Act (including, but not limited to, marsh, vernal pool, coastal, etc.) through direct removal, filling, hydrological interruption, or other means?	<input type="checkbox"/>	<input type="checkbox"/>	<input type="checkbox"/>	<input checked="" type="checkbox"/>
d) Interfere substantially with the movement of any native resident or migratory fish or wildlife species or with established native resident or migratory wildlife corridors, or impede the use of native wildlife nursery sites?	<input type="checkbox"/>	<input type="checkbox"/>	<input checked="" type="checkbox"/>	<input type="checkbox"/>
e) Conflict with any local policies or ordinances protecting biological resources, such as a tree preservation policy or ordinance?	<input type="checkbox"/>	<input type="checkbox"/>	<input type="checkbox"/>	<input checked="" type="checkbox"/>
f) Conflict with the provisions of an adopted Habitat Conservation Plan, Natural Community Conservation Plan, or other approved local, regional, or state habitat conservation plan?	<input type="checkbox"/>	<input type="checkbox"/>	<input type="checkbox"/>	<input checked="" type="checkbox"/>

**IV. BIOLOGICAL RESOURCES DISCUSSION:**

The site is an existing, undeveloped, previously disturbed parcel. Best management practices will be implemented during the construction phase. Should biological resources be found, construction will be paused until it is determined that construction activities will not encroach or disturb protected species, as determined by a qualified practitioner.

<b>V. CULTURAL RESOURCES.</b> <i>Would the Project:</i>	Potentially Significant Impact (PSI)	Potentially Significant Unless Mitigation Incorporated (PSUMI)	Less Than Significant Impact (LTSI)	No Impact (NI)
a) Cause a substantial adverse change in the significance of a historical resource as defined in §15064.5?	<input type="checkbox"/>	<input type="checkbox"/>	<input checked="" type="checkbox"/>	<input type="checkbox"/>
b) Cause a substantial adverse change in the significance of an archaeological resource	<input type="checkbox"/>	<input type="checkbox"/>	<input checked="" type="checkbox"/>	<input type="checkbox"/>

6b.2

pursuant to §15064.5?				
c) Directly or indirectly destroy a unique paleontological resource or site or unique geologic feature?	<input type="checkbox"/>	<input type="checkbox"/>	<input checked="" type="checkbox"/>	<input type="checkbox"/>
d) Disturb any human remains, including those interred outside of formal cemeteries?	<input type="checkbox"/>	<input type="checkbox"/>	<input checked="" type="checkbox"/>	<input type="checkbox"/>

**V. CULTURAL RESOURCES DISCUSSION**

The site is an existing, undeveloped, and previously disturbed parcel. Best management practices will be implemented during the construction phase. Construction will be paused if cultural artifacts are found. The cultural artifacts will be flagged but will remain undisturbed. Construction will not resume until it is determined that cultural resources will not be impacted by a qualified practitioner.



6b2

<b>VI. GEOLOGY AND SOILS.</b> <i>Would the Project:</i>	Potentially Significant Impact (PSI)	Potentially Significant Unless Mitigation Incorporated (PSUMI)	Less Than Significant Impact (LTSI)	No Impact (NI)
a) Expose people or structures to potential substantial adverse effects, including the risk of loss, injury, or death involving:	<input type="checkbox"/>	<input type="checkbox"/>	<input checked="" type="checkbox"/>	<input type="checkbox"/>
i. Rupture of a known earthquake fault, as delineated on the most recent Alquist-Priolo Earthquake Fault Zoning Map issued by the State Geologist for the area or based on other substantial evidence of a known fault? Refer to Division of Mines and Geology Special Publication 42?	<input type="checkbox"/>	<input type="checkbox"/>	<input checked="" type="checkbox"/>	<input type="checkbox"/>
ii. Strong Seismic ground shaking?	<input type="checkbox"/>	<input type="checkbox"/>	<input checked="" type="checkbox"/>	<input type="checkbox"/>
iii. Seismic-related ground failure, including liquefaction?	<input type="checkbox"/>	<input type="checkbox"/>	<input checked="" type="checkbox"/>	<input type="checkbox"/>
iv. Landslides?	<input type="checkbox"/>	<input type="checkbox"/>	<input type="checkbox"/>	<input checked="" type="checkbox"/>
b) Result in substantial soil erosion or the loss of topsoil?	<input type="checkbox"/>	<input type="checkbox"/>	<input checked="" type="checkbox"/>	<input type="checkbox"/>
c) Be located on a geologic unit or soil that is unstable or that would become unstable as a result of the project, and potentially result in on- or off-site landslides, lateral spreading, subsidence, liquefaction or collapse?	<input type="checkbox"/>	<input type="checkbox"/>	<input checked="" type="checkbox"/>	<input type="checkbox"/>
d) Be located on expansive soil, as defined in Table 18-1-B of the Uniform Building Code (1994), creating substantial risks to life or property?	<input type="checkbox"/>	<input type="checkbox"/>	<input checked="" type="checkbox"/>	<input type="checkbox"/>
e) Have soils incapable of adequately supporting the use of septic tanks or alternative wastewater disposal systems where sewers are not available for the disposal of wastewater?	<input type="checkbox"/>	<input type="checkbox"/>	<input checked="" type="checkbox"/>	<input type="checkbox"/>

**VI. GEOLOGY AND SOILS DISCUSSION:** A geotechnical report will provide the appropriate design methods to ensure health and safety and reduce the risk of structure failure.

<b>VII. GREENHOUSE GAS EMISSIONS.</b> <i>Would the Project:</i>	Potentially Significant Impact (PSI)	Potentially Significant Unless Mitigation Incorporated (PSUMI)	Less Than Significant Impact (LTSI)	No Impact (NI)
a) Generate greenhouse gas emissions, either directly or indirectly, that may have a significant impact on the environment?	<input type="checkbox"/>	<input type="checkbox"/>	<input checked="" type="checkbox"/>	<input type="checkbox"/>

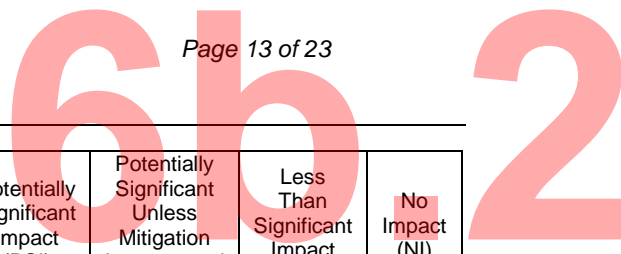
6b.2

b) Conflict with an applicable plan, policy or regulation adopted for the purpose of reducing the emissions of greenhouse gases?	<input type="checkbox"/>	<input type="checkbox"/>	<input checked="" type="checkbox"/>	<input type="checkbox"/>
--	--------------------------	--------------------------	-------------------------------------	--------------------------

**Background:**

**VII. GREENHOUSE GAS EMISSIONS DISCUSSION**

The intensity of the land use will be reduced by changing the zone from commercial to residential. The number of daily vehicle trips for a commercial zone exceed those generated by a single-family dwelling unit.



<b>VIII. HAZARDS AND HAZARDOUS MATERIALS.</b> <i>Would the Project:</i>	Potentially Significant Impact (PSI)	Potentially Significant Unless Mitigation Incorporated (PSUMI)	Less Than Significant Impact (LTSI)	No Impact (NI)
a) Create a significant hazard to the public or the environment through the routine transport, use, or disposal of hazardous materials?	<input type="checkbox"/>	<input type="checkbox"/>	<input checked="" type="checkbox"/>	<input type="checkbox"/>
b) Create a significant hazard to the public or the environment through reasonable foreseeable upset and accident conditions involving the release of hazardous materials into the environment?	<input type="checkbox"/>	<input type="checkbox"/>	<input checked="" type="checkbox"/>	<input type="checkbox"/>
c) Emit hazardous emissions or handle hazardous or acutely hazardous materials, substances, or waste within one-quarter mile of an existing or proposed school?	<input type="checkbox"/>	<input type="checkbox"/>	<input checked="" type="checkbox"/>	<input type="checkbox"/>
d) Be located on a site, which is included on a list of hazardous materials sites compiled pursuant to Government Code Section 65962.5 and, as a result, would it create a significant hazard to the public or the environment?	<input type="checkbox"/>	<input type="checkbox"/>	<input type="checkbox"/>	<input checked="" type="checkbox"/>
e) For a project located within an airport land use plan or, where such a plan has not been adopted, within two miles of a public airport or public use airport, would the project result in a safety hazard for people residing or working in the project area?	<input type="checkbox"/>	<input type="checkbox"/>	<input checked="" type="checkbox"/>	<input type="checkbox"/>
f) For a project within the vicinity of a private airstrip, would the project result in a safety hazard for people residing or working in the project area?	<input type="checkbox"/>	<input type="checkbox"/>	<input checked="" type="checkbox"/>	<input type="checkbox"/>
g) Impair implementation of or physically interfere with an adopted emergency response plan or emergency evacuation plan?	<input type="checkbox"/>	<input type="checkbox"/>	<input type="checkbox"/>	<input checked="" type="checkbox"/>
h) Expose people or structures to a significant risk of loss, injury or death involving wildland fires, including where wildlands are adjacent to urbanized areas or where residences are intermixed with wildlands?	<input type="checkbox"/>	<input type="checkbox"/>	<input checked="" type="checkbox"/>	<input type="checkbox"/>

**Background:**

The project site is not currently listed as a site containing hazardous materials.

**VIII. HAZARDS AND HAZARDOUS MATERIALS DISCUSSION**

<b>IX. HYDROLOGY AND WATER QUALITY.</b> Would the Project:	Potentially Significant Impact (PSI)	Potentially Significant Unless Mitigation Incorporated (PSUMI)	Less Than Significant Impact (LTSI)	No Impact (NI)
a) Violate any water quality standards or waste discharge requirements	<input type="checkbox"/>	<input type="checkbox"/>	<input type="checkbox"/>	<input checked="" type="checkbox"/>
b) Substantially deplete groundwater supplies or interfere substantially with groundwater recharge such that the	<input type="checkbox"/>	<input type="checkbox"/>	<input type="checkbox"/>	<input checked="" type="checkbox"/>

6b.2

there would be a net deficit in aquifer volume or a lowering of the local groundwater table level (e.g., the production rate of pre-existing nearby wells would drop to a level which would not support existing land uses or planned uses for which permits have been granted)?				
c) Substantially alter the existing drainage pattern of the site or area, including through the alteration of the course of a stream or river, in a manner which would result in substantial erosion or siltation on- or off-site?	<input type="checkbox"/>	<input type="checkbox"/>	<input type="checkbox"/>	<input checked="" type="checkbox"/>
d) Substantially alter the existing drainage pattern of the site or area, including through the alteration of the course of a stream or river, or substantially increase the rate or amount of surface runoff in a manner which would result in flooding on- or off-site?	<input type="checkbox"/>	<input type="checkbox"/>	<input type="checkbox"/>	<input checked="" type="checkbox"/>
e) Create or contribute runoff water, which would exceed the capacity of existing or planned stormwater drainage systems or provide substantial additional sources of polluted runoff?	<input type="checkbox"/>	<input type="checkbox"/>	<input checked="" type="checkbox"/>	<input type="checkbox"/>
f) Otherwise substantially degrade water quality?	<input type="checkbox"/>	<input type="checkbox"/>	<input type="checkbox"/>	<input checked="" type="checkbox"/>
g) Place housing within a 100-year flood hazard area as mapped on a federal Flood Hazard Boundary or Flood Insurance Rate Map or other flood hazard delineation map?	<input type="checkbox"/>	<input type="checkbox"/>	<input type="checkbox"/>	<input checked="" type="checkbox"/>
h) Place within a 100-year flood hazard area structures which would impede or redirect flood flows?	<input type="checkbox"/>	<input type="checkbox"/>	<input type="checkbox"/>	<input checked="" type="checkbox"/>
i) Expose people or structures to a significant risk of loss, injury or death involving flooding, including flooding as a result of the failure of a levee or dam?	<input type="checkbox"/>	<input type="checkbox"/>	<input type="checkbox"/>	<input checked="" type="checkbox"/>
j) Inundation by seiche, tsunami, or mudflow?	<input type="checkbox"/>	<input type="checkbox"/>	<input type="checkbox"/>	<input checked="" type="checkbox"/>

**Background:**

**IX. HYDROLOGY AND WATER QUALITY DISCUSSION**

The Project will be required to prepare a grading plan and technical hydrology studies as required by the California Water Boards.

<p><b>X. LAND USE/PLANNING</b> <i>Would the Project:</i></p>	Potentially Significant Impact (PSI)	Potentially Significant Unless Mitigation Incorporated (PSUMI)	Less Than Significant Impact (LTSI)	No Impact (NI)
--	--------------------------------------	--	-------------------------------------	----------------

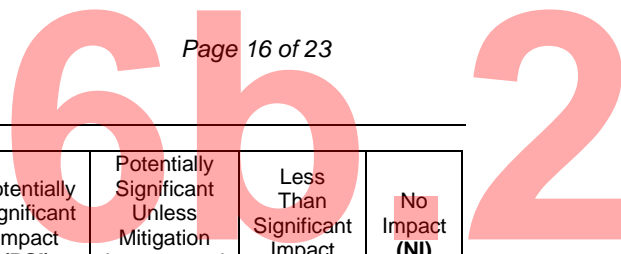
6b.2

a) Physically divide an established community?	<input type="checkbox"/>	<input type="checkbox"/>	<input type="checkbox"/>	<input checked="" type="checkbox"/>
b) Conflict with any applicable land use plan, policy, or regulation of an agency with jurisdiction over the project (including, but not limited to the general plan, specific plan, local coastal program, or zoning ordinance) adopted for the purpose of avoiding or mitigating an environmental effect?	<input type="checkbox"/>	<input type="checkbox"/>	<input type="checkbox"/>	<input checked="" type="checkbox"/>
c) Conflict with any applicable habitat conservation plan or natural community conservation plan?	<input type="checkbox"/>	<input type="checkbox"/>	<input type="checkbox"/>	<input checked="" type="checkbox"/>

**Background:**

**X. LAND USE/PLANNING DISCUSSION**

The landscaping will be compatible with desertscape and will abide by the Imperial County Agricultural Commissioner’s plant palette requirements.



<b>XI. MINERAL RESOURCES.</b> <i>Would the Project:</i>	Potentially Significant Impact (PSI)	Potentially Significant Unless Mitigation Incorporated (PSUMI)	Less Than Significant Impact (LTSI)	No Impact (NI)
a) Result in the loss of availability of a known mineral resource that would be of value to the region and the residents of the state?	<input type="checkbox"/>	<input type="checkbox"/>	<input type="checkbox"/>	<input checked="" type="checkbox"/>
b) Result in the loss of availability of a locally important mineral resource recovery site delineated on a local general plan, specific plan or other land use plan?	<input type="checkbox"/>	<input type="checkbox"/>	<input type="checkbox"/>	<input checked="" type="checkbox"/>

**Background:**

**XI. MINERAL RESOURCES DISCUSSION**

No known mineral resources in the project area.

<b>XII. NOISE.</b> <i>Would the Project:</i>	Potentially Significant Impact (PSI)	Potentially Significant Unless Mitigation Incorporated (PSUMI)	Less Than Significant Impact (LTSI)	No Impact (NI)
a) Exposure of persons to or generation of noise levels in excess of standards established in the local general plan or noise ordinance, or applicable standards of other agencies?	<input type="checkbox"/>	<input type="checkbox"/>	<input type="checkbox"/>	<input checked="" type="checkbox"/>
b) ) Exposure of persons to or generation of excessive ground borne vibration or ground borne noise levels?	<input type="checkbox"/>	<input type="checkbox"/>	<input checked="" type="checkbox"/>	<input type="checkbox"/>
c) A substantial permanent increase in ambient noise levels in the project vicinity above levels existing without the project?	<input type="checkbox"/>	<input type="checkbox"/>	<input type="checkbox"/>	<input checked="" type="checkbox"/>
d) A substantial temporary or periodic increase in ambient noise levels in the project vicinity above levels existing without the project?	<input type="checkbox"/>	<input type="checkbox"/>	<input checked="" type="checkbox"/>	<input type="checkbox"/>
e) For a project located within an airport land use plan or, where such a plan has not been adopted, within two miles of a public airport or public use airport, would the project expose people residing or working in the project area to excessive noise levels?	<input type="checkbox"/>	<input type="checkbox"/>	<input type="checkbox"/>	<input checked="" type="checkbox"/>
f) For a project within the vicinity of a private airstrip, would the project expose people	<input type="checkbox"/>	<input type="checkbox"/>	<input type="checkbox"/>	<input checked="" type="checkbox"/>

6b.2

residing or working in the project area to excessive noise levels?				
--	--	--	--	--

**Background:**

**XII. NOISE DISCUSSION**

It is anticipated that there will be an increase in noise during the construction phase of the project. Best Management Practices will be utilized during the construction phase. The project is anticipated to reduce the potential of noise by changing the intensity of the land use from commercial to residential.

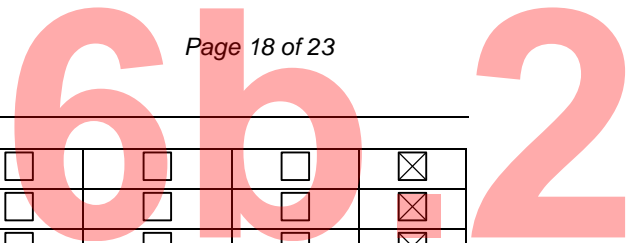
<b>XIII. POPULATION AND HOUSING.</b> <i>Would the Project:</i>	Potentially Significant Impact (PSI)	Potentially Significant Unless Mitigation Incorporated (PSUMI)	Less Than Significant Impact (LTSI)	No Impact (NI)
a) Induce substantial population growth in an area, either directly (for example, by proposing new homes and business) or indirectly (for example, through extension of roads or other infrastructure)?	<input type="checkbox"/>	<input type="checkbox"/>	<input checked="" type="checkbox"/>	<input type="checkbox"/>
b) Displace substantial numbers of existing housing, necessitating the construction of replacement housing elsewhere?	<input type="checkbox"/>	<input type="checkbox"/>	<input type="checkbox"/>	<input checked="" type="checkbox"/>
c) Displace substantial numbers of people, necessitating the construction of replacement housing elsewhere?	<input type="checkbox"/>	<input type="checkbox"/>	<input type="checkbox"/>	<input checked="" type="checkbox"/>

**Background:**

**XIII. POPULATION AND HOUSING DISCUSSION**

The project will add two single-family dwelling units. The increase in population is negligible.

<b>XIV. PUBLIC SERVICES.</b> <i>Would the Project:</i>	Potentially Significant Impact (PSI)	Potentially Significant Unless Mitigation Incorporated (PSUMI)	Less Than Significant Impact (LTSI)	No Impact (NI)
a) Result in substantial adverse physical impacts associated with the provision of new or physically altered governmental facilities, need for new or physically altered governmental facilities, the construction of which could cause significant environmental impacts, in order to maintain acceptable service ratios, response times, or other performance objectives for any of the public services:	<input type="checkbox"/>	<input type="checkbox"/>	<input type="checkbox"/>	<input checked="" type="checkbox"/>



1) Fire Protection?	<input type="checkbox"/>	<input type="checkbox"/>	<input type="checkbox"/>	<input checked="" type="checkbox"/>
2) Police Protection?	<input type="checkbox"/>	<input type="checkbox"/>	<input type="checkbox"/>	<input checked="" type="checkbox"/>
3) Schools?	<input type="checkbox"/>	<input type="checkbox"/>	<input type="checkbox"/>	<input checked="" type="checkbox"/>
4) Parks?	<input type="checkbox"/>	<input type="checkbox"/>	<input type="checkbox"/>	<input checked="" type="checkbox"/>
5) Other Public Facilities?	<input type="checkbox"/>	<input type="checkbox"/>	<input type="checkbox"/>	<input type="checkbox"/>

**Background:**

**XIV. PUBLIC SERVICES DISCUSSION**

The proposed project will require Fire and Police services but will not have a significant impact.

<b>XV. RECREATION.</b> <i>Would the Project:</i>	Potentially Significant Impact (PSI)	Potentially Significant Unless Mitigation Incorporated (PSUMI)	Less Than Significant Impact (LTSI)	No Impact (NI)
a) Would the project increase the use of the existing neighborhood and regional parks or other recreational facilities such that substantial physical deterioration of the facility would occur or be accelerated?	<input type="checkbox"/>	<input type="checkbox"/>	<input checked="" type="checkbox"/>	<input type="checkbox"/>
b) Does the project include recreational facilities or require the construction or expansion of recreational facilities which might have an adverse effect on the environment?	<input type="checkbox"/>	<input type="checkbox"/>	<input checked="" type="checkbox"/>	<input type="checkbox"/>

**Background:**

**XV. RECREATION DISCUSSION**

The population increase will be negligible.

<b>XVI. TRANSPORTATION/TRAFFIC.</b> <i>Would the Project:</i>	Potentially Significant Impact (PSI)	Potentially Significant Unless Mitigation Incorporated (PSUMI)	Less Than Significant Impact (LTSI)	No Impact (NI)
a) Conflict with an applicable plan, ordinance or policy establishing measures of effectiveness for the performance of the circulation system, taking into account all modes of transportation including mass transit and non-motorized travel and relevant components of the circulation system, including but not limited to intersections, streets, highways and freeways, pedestrian and bicycle paths, and mass	<input type="checkbox"/>	<input type="checkbox"/>	<input checked="" type="checkbox"/>	<input type="checkbox"/>



6b.2

transit?				
b) Conflict with an applicable congestion management program, including, but not limited to level of service standards and travel demand measures, or other standards established by the county congestion management agency for designated roads or highways?	<input type="checkbox"/>	<input type="checkbox"/>	<input checked="" type="checkbox"/>	<input type="checkbox"/>
c) Result in a change in air traffic patterns, including either an increase in traffic levels or a change in location that results in substantial safety risks?				
d) Substantially increase hazards due to a design feature (e.g., sharp curves or dangerous intersections) or incompatible uses (e.g., farm equipment)?	<input type="checkbox"/>	<input type="checkbox"/>	<input checked="" type="checkbox"/>	<input type="checkbox"/>
e) Result in inadequate emergency access?	<input type="checkbox"/>	<input type="checkbox"/>	<input checked="" type="checkbox"/>	<input type="checkbox"/>
f) Conflict with adopted policies, plans, or programs regarding public transit, bicycle, or pedestrian facilities, or otherwise decrease the performance or safety of such facilities?	<input type="checkbox"/>	<input type="checkbox"/>	<input checked="" type="checkbox"/>	<input type="checkbox"/>

**Background:**

**XVI. TRANSPORTATION/TRAFFIC DISCUSSION**

The project is located within City limits along developed roads. The development will reduce the land use intensity and increase the population density by a negligible amount.

6b.2

<b>XVII. UTILITIES AND SERVICE SYSTEMS</b> Would the Project:	Potentially Significant Impact (PSI)	Potentially Significant Unless Mitigation Incorporated (PSUMI)	Less Than Significant Impact (LTSI)	No Impact (NI)
a) Exceed wastewater treatment requirements of the applicable Regional Water Quality Control Board?	<input type="checkbox"/>	<input type="checkbox"/>	<input checked="" type="checkbox"/>	<input type="checkbox"/>
b) Require or result in the construction of new water or wastewater treatment facilities or expansion of existing facilities, the construction of which could cause significant environmental effects?	<input type="checkbox"/>	<input type="checkbox"/>	<input type="checkbox"/>	<input checked="" type="checkbox"/>
c) Require or result in the construction of new storm water drainage facilities or expansion of existing facilities, the construction of which could cause significant environmental effects?	<input type="checkbox"/>	<input type="checkbox"/>	<input checked="" type="checkbox"/>	<input type="checkbox"/>
d) Have sufficient water supplies available to serve the project from existing entitlements and resources, or are new or expanded entitlements needed?	<input type="checkbox"/>	<input type="checkbox"/>	<input type="checkbox"/>	<input checked="" type="checkbox"/>
e) Result in a determination by the wastewater treatment provider, which serves or may serve the project that it has adequate capacity to serve the project's projected demand in addition to the provider's existing commitments?	<input type="checkbox"/>	<input type="checkbox"/>	<input checked="" type="checkbox"/>	<input type="checkbox"/>
f) Be served by a landfill with sufficient permitted capacity to accommodate the project's solid waste disposal needs?	<input type="checkbox"/>	<input type="checkbox"/>	<input checked="" type="checkbox"/>	<input type="checkbox"/>
g) Comply with federal, state, and local statutes and regulations related to solid waste?	<input type="checkbox"/>	<input type="checkbox"/>	<input checked="" type="checkbox"/>	<input type="checkbox"/>

**Background:**

**XVII. UTILITIES AND SERVICE SYSTEMS DISCUSSION**

Residential water and wastewater rates will apply to the project. The applicant will be required to work with the Imperial Irrigation District for power supply. The dwelling units are anticipated to have a negligible impact to the City facilities.

6b.2

**SECTION 3 - III. MANDATORY FINDINGS OF SIGNIFICANCE**

The following are Mandatory Findings of Significance in accordance with Section 15065 of the CEQA Guidelines.

<b>XVIII. MANDATORY FINDINGS OF SIGNIFICANCE</b> Would the Project:	Potentially Significant Impact (PSI)	Potentially Significant Unless Mitigation Incorporated (PSUMI)	Less Than Significant Impact (LTSI)	No Impact (NI)
a) ) Does the project have the potential to degrade the quality of the environment, substantially reduce the habitat of a fish or wildlife species, cause a fish or wildlife population to drop below self-sustaining levels, threaten to eliminate a plant or animal community, reduce the number or restrict the range of a rare or endangered plant or animal or eliminate important examples of the major periods of California history or prehistory?	<input type="checkbox"/>	<input type="checkbox"/>	<input checked="" type="checkbox"/>	<input type="checkbox"/>
b) Does the project have impacts that are individually limited, but cumulatively considerable? (“Cumulatively considerable” means that the incremental effects of a project are considerable when viewed in connection with the effects of past projects, the effects of other current projects, and the effects of probable future projects)?	<input type="checkbox"/>	<input type="checkbox"/>	<input checked="" type="checkbox"/>	<input type="checkbox"/>
c) Does the project have environmental effects which will cause substantial adverse effects on human beings, either directly or indirectly?	<input type="checkbox"/>	<input type="checkbox"/>	<input checked="" type="checkbox"/>	<input type="checkbox"/>

**Background:**

**XVIII. MANDATORY FINDINGS OF SIGNIFICANCE DISCUSSION**

None.

6b.2

**III. PERSONS AND ORGANIZATIONS CONSULTED**

Brawley Public Works Department

Brawley Fire Department

6b.2

---

**V. REFERENCES**

2022 California Fire Code  
2008 General Plan EIR

# 6b.3

## Vicinity Map/Project Location

APN's:

047-301-012 and 047-301-019



6b.4

**ORDINANCE NO. 2025-XX**

**ORDINANCE OF THE CITY COUNCIL OF THE CITY OF BRAWLEY, CALIFORNIA, AMENDING THE BRAWLEY MUNICIPAL CODE TO CHANGE THE ZONING FOR A SPECIFIC PROPERTY.**

**THE CITY COUNCIL OF THE CITY OF BRAWLEY, CALIFORNIA DOES ORDAIN AS FOLLOWS:**

**Section 1:** The zoning map adopted at Chapter 27, Article III, Section 27.60 of the Brawley Municipal Code is hereby amended as follows:

The affected properties are described as follows:

LOT 8 ULLOA SUB FM 1 28

*and*

LOT 7 ULLOA SUB FM 1 28

Said parcels *each* contain .13 acres.

The current zoning for the Property is C-1. The zoning for the Property enacted by this ordinance is R-1.

APN	ZONE CLASSIFICATION	
	As amended by this Ordinance	Existing
047-301-02 (388 Palm Ave.)	R-1 (Residential Single Family)	C-1 (Neighborhood Commercial)
047-301-019 (400 Palm Ave.)	R-1 (Residential Single Family)	C-1 (Neighborhood Commercial)

**SECTION 2:** This ordinance shall be effective thirty (30) days after its adoption and the City Clerk shall cause a certified copy of this ordinance to be published one time within fifteen ( 15) days after its adoption in a newspaper of general circulation printed in Imperial County and circulated in the City of Brawley.

6b.4

APPROVED, PASSED, AND ADOPTED, at the regular meeting of the Brawley City Council of the City of Brawley, held on DAY MONTH YEAR.

CITY OF BRAWLEY, CALIFORNIA

---

Gil Rebollar, Mayor

ATTEST:

1<sup>st</sup> Reading

2<sup>nd</sup> Reading



# City of Brawley

City Council  
February 18, 2025  
Agenda Item No 6c



## STAFF REPORT

**To:** City Council  
**From:** Romualdo Medina, Public Works Director  
**Prepared by:** Ana Gutierrez, Public Works Analyst  
**Subject:** **Wastewater Treatment Plant Variable Frequencies Drives (VFDs) Purchase and Budget Adjustment Approval.**

### RECOMMENDATION:

Authorize a budget adjustment and approve the purchase of two VFDs for the Wastewater Treatment Plant (WWTP).

### BACKGROUND INFORMATION:

The Wastewater Treatment Plant has 4 - 175 HP Motors that supply the aeration to the Bio Lac basins, which were initially put into operation in 2011. These blowers are controlled by VFDs, which modulate the motors to provide the required amount of air to keep the biological mass in suspension and a denitrification stage. This stage allows the system to remove ammonia to non-toxic levels from aquatic life at discharge.

Two of the four pumps were replaced last fiscal year, with the intention of replacing the other two this upcoming fiscal year. One of the two VFDs to be replaced this upcoming fiscal year has failed, and we are currently operating with three VFDs. Replacement parts are becoming obsolete, harder to procure, and difficult to determine availability. Operations staff requests to authorize a budget adjustment so that the two VFDs can be purchased and installed.

The cost of replacing each of the VFD Units is 57,169.20. The total cost for two units will be \$114,338.40 with a 10% contingency of \$11,433.84, for any incidentals for a total of \$125,772.24

The detailed scope of work is included in the attached proposal.

### FISCAL IMPACT:

The FY24/25 Capital Improvement Plan did not allocate funding for this project. Therefore, the following budget adjustments are recommended:

511-332.000-800.300 – Expense – Improvements Other Than Buildings: \$125,772.24

The funds will be covered by the Wastewater Fund Reserves.

### ALTERNATIVES:

No alternative is recommended at this time.

6c

**ATTACHMENTS:**

1. Sloan Proposal

**REPORT COORDINATED WITH (other than person preparing the staff report):**

Staff, Title or Consultant, Agency

, , ,

**REPORT APPROVAL(S):**

Staff, Title or Consultant, Agency

Jimmy Duran, City Manager

Silvia Luna, Finance Director

Status – Date of Status

Approved - 2/11/2025

Approved - 2/11/2025

February 6, 2025

Brawley Waste Water  
180 South Western Ave  
Brawley, Ca 92227  
Jared Jaramillo 760 344 5803 Ext5

**Identifier: Blower VFD Replacement**

**Scope:**

- a. Remove all VACON components as there is individual diode bridge assemblies, soft-charge circuit assembly and 18 pulse transformer.
- b. Retain bypass contactors and circuit breaker.
- c. Install New Mitsubishi VFD
- d. Install DC Link reactor
- e. Install MTE 8% passive harmonic filter, open style
- f. Add Mitsubishi PU with Cable and FR-A8AR relay card
- g. Wiring Materials with lugs
- h. Freight Charges:

Labor	\$12,168.00
Materials	\$35,082.32
Sales Tax	\$2,718.88
Freight sell:	\$5500.00
<u>Travel expenses</u>	<u>\$1,700.00</u>
<b>Total</b>	<b>\$57,169.20 per drive</b>

Delivery on MTE is 5-6 weeks  
Delivery on Mitsubishi VFD 1-2 weeks

Notes: In a pinch, the VFD is available to ship in a week or less, then it could be installed with the harmonic filter installation to follow. They could still run a blower without the harmonic filter. That scenario will cost more given the additional trip and overtime if required.

Mike Rinaudo  
Account / Project Manager Cell Phone: 619-520-0047

Note: All materials and services quoted herein do not comply with any specific construction or project specifications unless specifically stated and agreed to within the quote.  
Quotes Good for 30 Calendar Days

# City of Brawley

City Council  
February 18, 2025  
Agenda Item No 6d



## STAFF REPORT

**To:** City Council  
**From:** Romualdo Medina, Public Works Director  
**Prepared by:** Ana Gutierrez, Public Works Analyst  
**Subject:** **Professional Engineering Design Agreement for Street Rehabilitation Project Phase I.**

### RECOMMENDATION:

Award Contract to The Holt Group, Inc. for the Design of the Street Rehabilitation Project Phase I in an amount that does not exceed \$59,561.84, and authorize the City Manager to execute all documentation relating to this Agreement.

### BACKGROUND INFORMATION:

On May 7, 2024, the Council awarded The Holt Group a contract to develop a Pavement Management System for the City of Brawley. The Citywide Pavement Management System is programmed to be completed in four (4) phases. After review and discussion, the staff requests the award of a Design Agreement to the Holt Group for the design improvements for the Streets Rehabilitation Project Phase 1, not exceeding \$59,561.84.

The city will allocate funding for the pavement of various city streets based on the Pavement Management System developed by the Holt Group. The Holt Group will design the needed improvements, construction cost estimates, and technical specifications. The Holt Group is an approved-on call consultant for professional engineering services.

### FISCAL IMPACT:

Upon completion of The Holt Group Street Condition Assessment, a new project will be added to the FY24-25 Capital Improvement Plan Budget. The street design portion of this project will necessitate several budget adjustments to allocate funding for the required professional design services, as outlined below:

215-312.000-920.421..... Transfer to Streets CIP - Expense .....	\$ 59,561.84
421-310.000-600.215..... Transfer from Measure D Funds - Revenue .....	\$ 59,561.84
421-310.000-730. 100.....Professional Services - Expense .....	\$ 59,561.84

### ALTERNATIVES:

No alternative is recommended at this time.

### ATTACHMENTS:

1. Proposal

6d

**REPORT COORDINATED WITH (other than person preparing the staff report):**

Staff, Title or Consultant, Agency

, , ,

**REPORT APPROVAL(S):**

Staff, Title or Consultant, Agency

Silvia Luna, Finance Director

Jimmy Duran, City Manager

Status – Date of Status

Approved - 2/11/2025

Approved - 2/11/2025

February 10, 2025

Mr. Rom Medina  
Director of Public Works and Operations  
City of Brawley  
180 South Western Avenue  
Brawley, California  
92227

Re: City of Brawley – Street Maintenance Improvement Project – Design Proposal –  
THG Proposal Number 2025-009

Dear Mr. Medina,

The Holt Group recently completed the City of Brawley – East Brawley Street System Assessment Report. It is my understanding that the City of Brawley is considering completing maintenance improvements for the report street sections which were identified to be in good and moderate condition. The street maintenance sections to be improved constitute 15 miles of roadway.

The Holt Group proposes completing the following project design scope of services:

1. Complete field work to identify the pavement striping along the streets to be improved.
2. Quantify the length of cracks along the 15 miles of streets to be improved.
3. Prepare improvement plans for the street maintenance improvement project.
4. Prepare the project specifications including the Legal Advertisement, Instruction for Bidders, Proposal Forms including Contractors Bid Form, Contract Documents, General Conditions, Special Conditions and Technical Conditions.
5. Prepare a final quantity estimate.
6. Prepare a final cost estimate.
7. Meet and coordinate with the Brawley Public Works Staff during the design period.

6d.1

The Holt Group proposes to provide the project design scope of services for the not to exceed lump sum of \$59,561.84.

If questions arise please contact me. Thank you for the opportunity to submit this proposal to the City of Brawley.

Sincerely,



James G. "Jack" Holt, P.E.  
Principal Engineer  
The Holt Group, Inc.

# City of Brawley

City Council  
February 18, 2025  
Agenda Item No 6e



## STAFF REPORT

**To:** City Council  
**From:** Mike York, Fire Chief  
**Prepared by:** Mike York, Fire Chief  
**Subject:** Budget adjustment for unanticipated revenues from the State of California

### RECOMMENDATION:

Approve amending the FY24/25 Budget for the Fire Department to reflect an increase in Revenue in the total amount of \$140,419.23 and to amend Overtime and Equipment line items.

### BACKGROUND INFORMATION:

In September 2024, the Brawley Fire Department responded to the "Boone" fire incident in Fresno County, during that incident, they were re-deployed to the "Line" Fire in San Bernardino County. These responses were part of the Brawley Fire Department's commitment to the State for receiving Cal-OES apparatus. Under the California Fire Assistance Agreement (CFAA) the personnel hours for department staff are reimbursed at pre-determined rates along with a 10% administrative surcharge. The reimbursement for the "Boone" incident was \$13,381.19, the reimbursement for the "Line" incident was \$127,038.04 for a total of \$140,419.23.

Staff recommends that \$113,815.12 received for personnel hours be used to address overtime expenditures, while the remaining \$26,604.11 be attributed to equipment purchases to enhance daily operations.

### FISCAL IMPACT:

The FY24/25 Fire Department budget will need the following budget adjustments:

GL 101-221.000-440.310 - State Reimbursement-Strike Teams - Revenue	\$ 140,419.32
GL 101-221.000-700.300- Overtime	- Expense \$ 113,815.12
GL 101-221.000-800.400 -Equipment	- Expense \$ 26,604.11

### ALTERNATIVES:

No alternatives suggested.

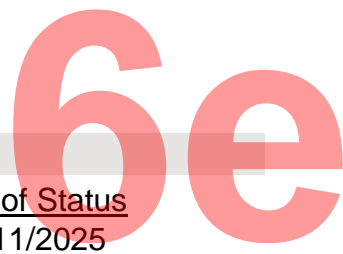
### ATTACHMENTS:

1. Boone Incident Reimbursement Invoice
2. Line Incident Reimbursement Invoice

### REPORT COORDINATED WITH (other than person preparing the staff report):

Staff, Title or Consultant, Agency





**REPORT APPROVAL(S):**

Staff, Title or Consultant, Agency  
Silvia Luna, Finance Director  
Jimmy Duran, City Manager

Status – Date of Status  
Approved - 2/11/2025  
Approved - 2/11/2025

**California Fire Assistance Agreement  
Reimbursement Invoice  
Cal OES-CAL FIRE-USFS-BLM-NPS-FWS-BIA  
Cal OES F-142**

**6e-1**

**Federal Tax ID Number:** 95-6000680  
**UEI Number:** PZQ3DEBNKMK6  
**FI\$Cal Supplier ID:** 0000011686  
**FI\$Cal Address ID:** 6

**Invoice Number:** U-20241328-BRW  
**Invoice Date:** 10/30/2024  
**Incident Order Number:** CA-FKU-019190  
**Incident Name:** BOONE  
**MACS Designator:** BRW

**Remit Payment to:**

Brawley Fire Department  
383 Main Street,  
Brawley, CA, 92227

**Local Agency, Return Invoice to:**

Governor's Office of Emergency Services  
Fire and Rescue Division  
Reimbursement Processing

**SUMMARY INFORMATION**

Resource	Req. No.	Strike Team	Depart Date/Time	Return Date/Time	Personnel Total	Equipment Total	Support Vehicle	Expense Total	Admin Surchg
E-6620	E-354.5	XIM-6110-TF	09/06/2024 1100	09/09/2024 1200	\$9,123.54	\$0.00	\$0.00	\$0.00	\$912.35
WT-62	E-354.7	XIM-6110-TF	09/06/2024 1100	09/09/2024 1200	\$3,041.18	\$0.00	\$0.00	\$0.00	\$304.12
					<b>\$12,164.72</b>	<b>\$0.00</b>	<b>\$0.00</b>	<b>\$0.00</b>	<b>\$1,216.47</b>

**CLAIM TOTAL: \$13,381.19  
CAL FIRE (100.00%): \$13,381.19**

Mileage for Privately Owned Vehicle(POV) only and is figured at a of 0.655 per actual mile.

Engine Hours are based on a 16 hour portal to portal day for each 24 hour period.

Agency Salary Survey on file: 07/09/2024

**Support Vehicle Rates are:**

Sedan = \$226.000 per day  
Pick-Up (1/2 Ton) = \$166.000 per day  
Van = \$309.000 per day  
SUV = \$279.000 per day  
Other (3/4 Ton & Above) = \$265.000 per day

**Apparatus Rates are:**

Type I = \$173.470 per hour  
Type II = \$163.550 per hour  
Type III = \$156.740 per hour  
Type IV - VII = \$150.470 per hour  
Water Tender Tactical I = \$148.070 per hour  
Water Tender Tactical II = \$127.210 per hour

**Personnel Rates are:**

Chief = \$34.59  
Deputy Chief = \$34.59  
Division Chief = \$34.59  
Assistant Chief = \$34.59  
Battalion Chief = \$34.59  
Co. Officer/Capt./Lt. = \$27.77  
App. Officer/Eng = \$27.77  
Firefighter/FF-PMedic = \$27.77  
Administrative Rate: 0.10000


The Invoice amounts are computed on the California Fire Assistance Agreement currently in place between Cal OES, CAL FIRE, USFS, BLM, NPS, FWS and BIA. Local agencies that have wages that exceed the minimum base rate shall be reimbursed using the Salary Rate otherwise the established base rate shall be used for reimbursement.

**Formulas:** Salary Rate:  $[(S \times H \times 1.5) + M + E] \times A$  or Established Base Rate:  $[(B \times H \times 1.5) + M + E] \times A$

Where S = Salary Rate; H = Total hours on Incident; A = Administrative Rate (%); B = Established Hourly Base Rate; E = Engine Reimbursement, where applicable; M= Claimed Miles

**Reminder:** As per the California Fire Assistance Agreement, there will be a delay in payment for invoices not returned to Cal OES by the local agency within 30 days of receipt.

**I Certify that to the best of my knowledge and belief, and under penalty of perjury that the data above it correct.**

  
\_\_\_\_\_  
Signature

Fire Chief  
\_\_\_\_\_  
Title

12/10/2024  
\_\_\_\_\_  
Date

**California Fire Assistance Agreement  
Reimbursement Invoice  
Cal OES-CAL FIRE-USFS-BLM-NPS-FWS-BIA  
Cal OES F-142**

**6e 2**

<b>Federal Tax ID Number:</b> 95-6000680	<b>Invoice Number:</b> F-20241463-BRW
<b>UEI Number:</b> PZQ3DEBNKMK6	<b>Invoice Date:</b> 11/01/2024
<b>FI\$Cal Supplier ID:</b> 0000011686	<b>Incident Order Number:</b> CA-BDF-012520
<b>FI\$Cal Address ID:</b> 6	<b>Incident Name:</b> LINE
	<b>MACS Designator:</b> BRW

**Remit Payment to:**  
Brawley Fire Department  
1505 Jones Street,  
Brawley, CA, 92227

**Local Agency, Return Invoice to:**  
Governor's Office of Emergency Services  
Fire and Rescue Division  
Reimbursement Processing

**SUMMARY INFORMATION**

Resource	Req. No.	Strike Team	Depart Date/Time	Return Date/Time	Personnel Total	Equipment Total	Support Vehicle	Expense Total	Admin Surchg
E-6620	E-265.5	OES-6110-TF	09/09/2024 1200	09/28/2024 0000	\$50,033.66	\$0.00	\$279.00	\$0.00	\$5,031.27
WT-62	E-265.7	OES-6110-TF	09/09/2024 1200	09/27/2024 2359	\$28,495.44	\$0.00	\$279.00	\$0.00	\$2,877.44
E-6620	E-35200.2	OES-6110-TF	09/28/2024 0001	10/07/2024 1400	\$24,829.36	\$0.00	\$558.00	\$0.00	\$2,538.74
WT-62	E-35200.4	OES-6110-TF	09/28/2024 0001	10/07/2024 1400	\$10,456.66	\$0.00	\$558.00	\$0.00	\$1,101.47
					<b>\$113,815.12</b>	<b>\$0.00</b>	<b>\$1,674.00</b>	<b>\$0.00</b>	<b>\$11,548.92</b>

**CLAIM TOTAL: \$127,038.04  
USFS (100.00%): \$127,038.04**

Mileage for Privately Owned Vehicle(POV) only and is figured at a of 0.655 per actual mile. Engine Hours are based on a 16 hour portal to Agency Salary Survey on file: 07/09/2024 portal day for each 24 hour period.

**Support Vehicle Rates are:**  
Sedan = \$226.000 per day  
Pick-Up (1/2 Ton) = \$166.000 per day  
Van = \$309.000 per day  
SUV = \$279.000 per day  
Other (3/4 Ton & Above) = \$265.000 per day

**Apparatus Rates are:**  
Type I = \$173.470 per hour  
Type II = \$163.550 per hour  
Type III = \$156.740 per hour  
Type IV - VII = \$150.470 per hour  
Water Tender Tactical I = \$148.070 per hour  
Water Tender Tactical II = \$127.210 per hour

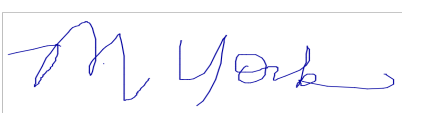
**Personnel Rates are:**  
Chief = \$34.59  
Deputy Chief = \$34.59  
Division Chief = \$34.59  
Assistant Chief = \$34.59  
Battalion Chief = \$34.59  
Co. Officer/Capt./Lt. = \$27.77  
App. Officer/Eng = \$27.77  
Firefighter/FF-PMedic = \$27.77  
Administrative Rate: 0.10000

The Invoice amounts are computed on the California Fire Assistance Agreement currently in place between Cal OES, CAL FIRE, USFS, BLM, NPS, FWS and BIA. Local agencies that have wages that exceed the minimum base rate shall be reimbursed using the Salary Rate otherwise the established base rate shall be used for reimbursement.

**Formulas:** Salary Rate:  $[(S \times H \times 1.5) + M + E] \times A$  or Established Base Rate:  $[(B \times H \times 1.5) + M + E] \times A$   
Where S = Salary Rate; H = Total hours on Incident; A = Administrative Rate (%); B = Established Hourly Base Rate; E = Engine Reimbursement, where applicable; M= Claimed Miles

**Reminder:** As per the California Fire Assistance Agreement, there will be a delay in payment for invoices not returned to Cal OES by the local agency within 30 days of receipt.

**I Certify that to the best of my knowledge and belief, and under penalty of perjury that the data above it correct.**



Fire Chief

12/10/2024

Signature

Title

Date